



Clean air that fits anywhere



Introducing the Compact Series **A new generation of ventilation**

Designed to make the most of every millimetre, the Compact Series combines space-saving form with powerful performance. Engineered with patented technologies and advanced heat recovery, it creates a healthier, comfortable environment while reducing energy use and running costs. An easy-to-install, efficient, future-ready ventilation system for any space where people live, work and learn.

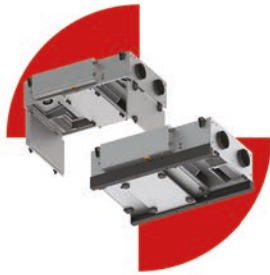
Visit [SolerPalau.co.uk](https://www.SolerPalau.co.uk) or scan here to learn more





Discover the Compact Series

A range of space-saving air handling solutions with market-leading performance and energy efficiency.



Product Series – Exhausto	CX3000 – Compact Ceiling Void Mount	VEX1000 RS & RT – Compact Floor Mount	VEX4000 + IHP – Modular Floor Mount
Airflow Range	<3300m ³ /hr	<9340m ³ /hr & <7460m ³ /hr	1050m ³ /hr to 36000m ³ /hr
Bypass (% & Auto / Manual)	Modulating	Rotary Thermal Wheel – No bypass	Modulating
Panel Thickness / Casework Build	50mm; Frameless Aluzinc – C4	50mm; Frameless Magnelis – C5	50mm; Aluminium profiles; Aluzinc – C4
Filtration (Standard & Options)	S: ePM1 50% (F7); E: ePM10 50% (M5); Optional S: ePM ₁ 80% (F9)	S: ePM1 50% (F7); E: ePM10 50% (M5); Optional S: ePM ₁ 80% (F9)	S: ePM1 50% (F7); E: ePM10 50% (M5); Optional S: ePM ₁ 80% (F9)
Control Interface	Excon	Excon+	Excon
Main Control Functions	Const speed; Const pressure, 0-10v	Multi-functions; aDCV; ALC™	Multi-functions; aDCV; ALC™
BMS Protocols	Local + HMI cable for remote control; Optional: Modbus RTU/RS485, BACnet MSTP/BACnet IP	Modbus RTU/RS485, BACnet MSTP/BACnet IP	Modbus RTU/RS485, BACnet MSTP/BACnet IP
USPs	Sliding rails for access doors as accessory 6x model sizes	Small footprint C5 Magnelis Removable components aDCV & ALC™ External controls 10x model sizes for side connections / 6x model sizes for top connections	Modular design IHP with 2x options Low GWP R454B 10x model sizes

Visit SolerPalau.co.uk or scan here to learn more

