



LOW PROFILE



Heat recovery



DESIGNED FOR AN EASY INSTALLATION

Domestic MVHR unit with high efficiency counterflow heat exchanger (up to 92%) and low consumption EC motors.

The unit assures a continuous and balanced ventilation system, extracting moist stale air from the wet rooms and at the same time introducing a tempered and filtered fresh air to the habitable rooms.

The optimized design allows compliance with the highest standards assuring a very low leakage level, high thermal insulation and a minimal sound level.

The integrated humidity sensor allows an automatic function tracking the indoor humidity and proportionally adjusting the fans speed.

Inlet/extraction filter G4 (ISO coarse 65%, at 140 m³/h), F7 (ISO ePM1 70%, at 140 m³/h).

Option, M5 (ISO ePM10 50%, at 140 m³/h). An integrated 100% bypass is activated either automatically or manually. The bypass is particularly useful when the indoors temperature is higher than outdoors and free cooling is preferable.

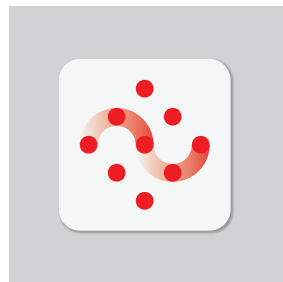


Touch screen

Remote (wired) touch screen display panel.

Functions:

- Easy control.
- Speed settings.
- Manual bypass.
- Boost activation.
- Automatic mode activation.
- Dirty filter alarm.



Connectair

Through the optional SPCM module, the unit can access Connectair, S&P's IoT that provides access to a new way to enjoy your ventilation.



Installer friendly

Simple access to all the components.

INSTALLATION FRIENDLY

A versatile product with advantages for installation.

A range of accessories lets the end user tailor the functions of the system to their specific requirements.

Characteristics:

- High efficiency counterflow heat exchanger.
- Low consumption EC motors.
- Minimal sound level.
- Automatic/manual bypass.
- Install friendly.
- User friendly.
- Customisable.
- Ceiling or wall installation.

Optional accessories:

- Integrable pre heater.
- Integrable voc sensor.
- Communication module.
- Integrable constant airflow module (Servoflow).

Specific applications



Domestic
MVHR
Single
dwelling



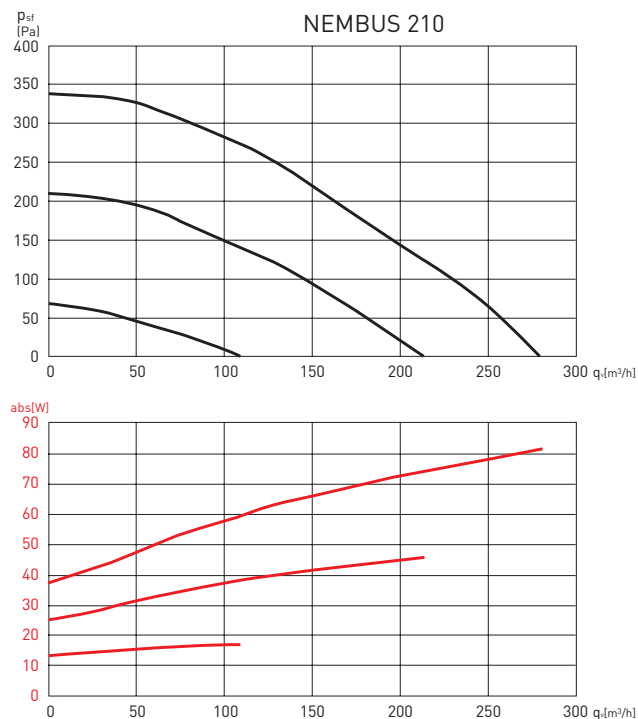
Domestic
MVHR
Multi dwelling
blocks

TECHNICAL CHARACTERISTICS

Model	Efficiency at 160 m³/h [%]	Supply	Maximum flow rate at 100 Pa (m³/h)	Sound pressure level, at 1.5m (160 m³/h - 100 Pa) [dB(A)]	Maximum absorbed power (W)
NEMBUS 210	84	230V 50/60Hz	230	36	75

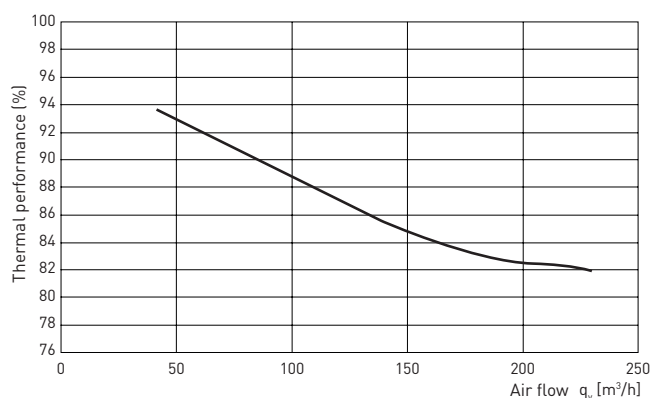
CHARACTERISTIC CURVES

- q_v = Flow rate (m^3/h).
- p_{sf} = Static pressure in mmcda and Pa.
- P_{abs} = Absorbed power (W).

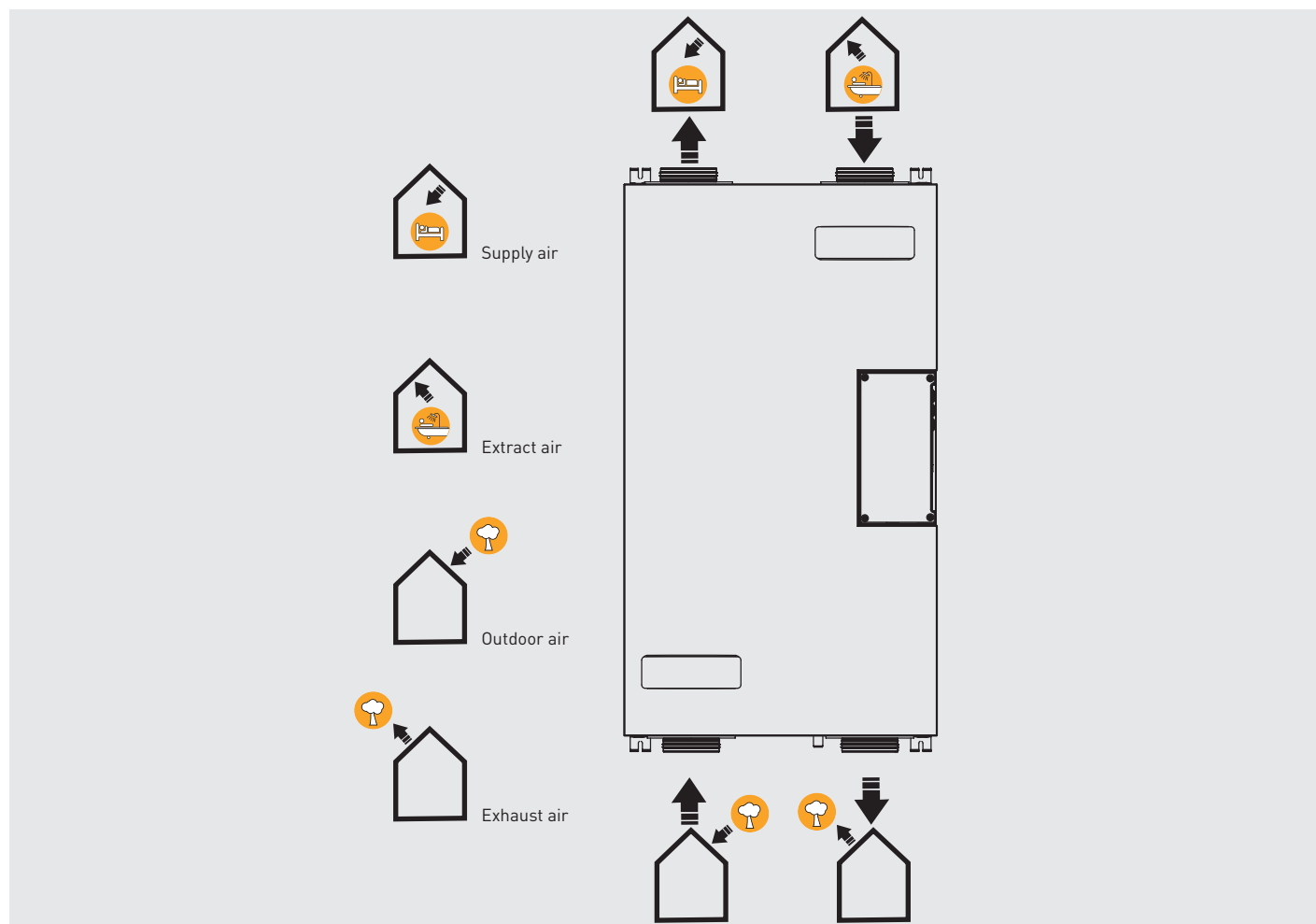


PERFORMANCE CURVE

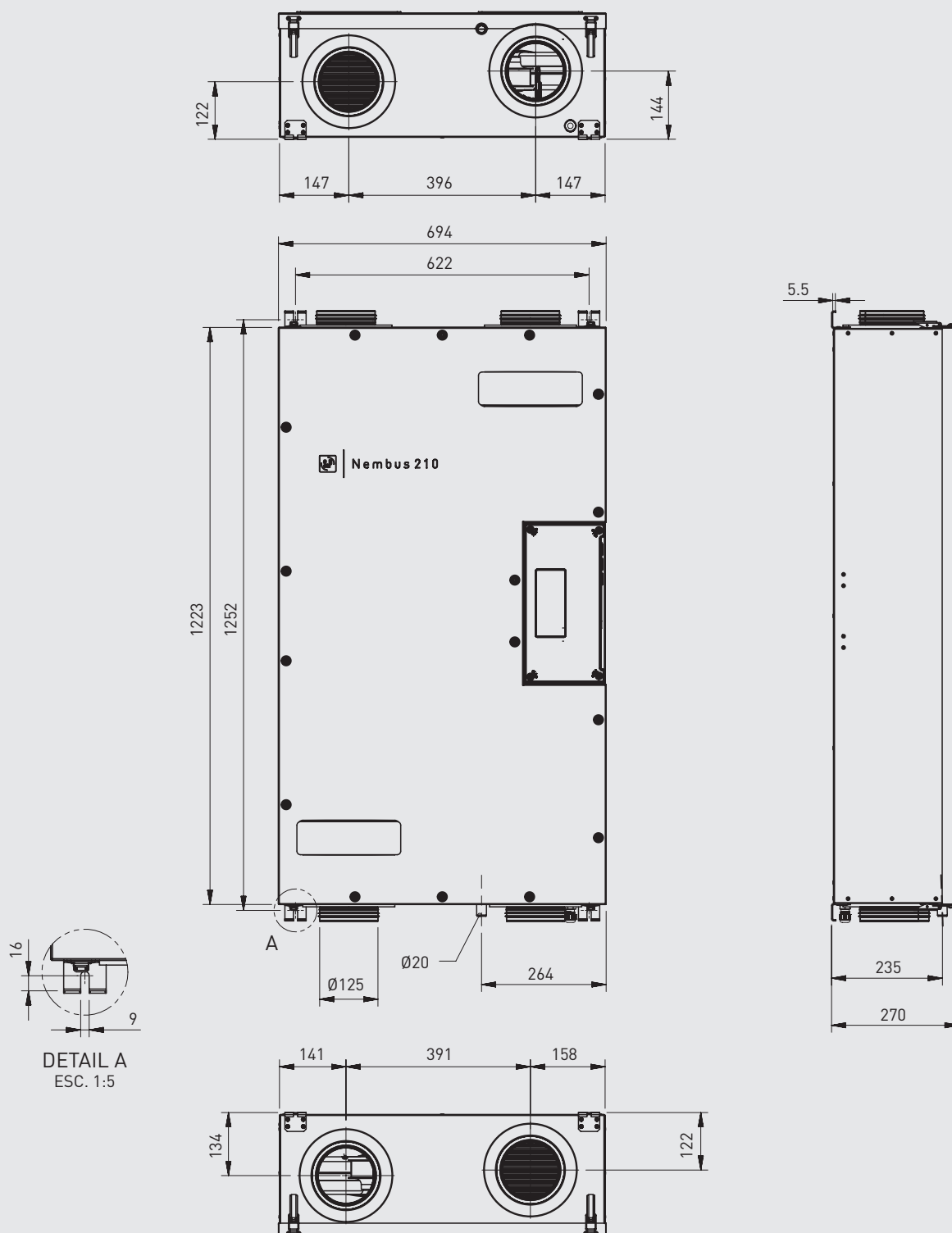
Performance according to EN 13141-7:2011-01 (20°C ext. - 7°C int.).



DIRECTION OF AIR FLOWS



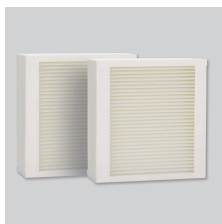
DIMENSIONS (mm)



NEMBUS SPECIFIC ACCESSORIES



SPCM
Communications module.



NEMBUS F
Filter replacement sets G4/G4 and G4/F7.



NEMBUS-PH
Preheating coils can be integrated into the equipment. Plug&Play.

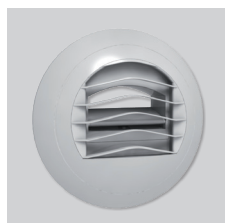


NEMBUS-VOC
VOC probe can be integrated into the unit. Plug&Play.



SABIK-NEMBUS-SF
Constant flow module that can be integrated into the unit. Plug&Play.

ASSEMBLY ACCESSORIES



BARJ BARP
Auto-adjustable suction inlets.



BDOP
Supply and extraction inlets.



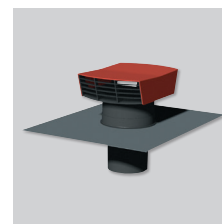
RDR
Auto-adjustable flow regulators. To be installed inside the duct.



RD BP
Auto-adjustable low-pressure flow regulators. (20-100 PA) To be installed inside the duct. 80mm diameter. Flow rate: 15 or 30 m³/h.



RD BP SM
Auto-adjustable flow regulators. To be installed inside the cuff of the BDOP nozzles. 80mm diameter. Flow rate: 15 or 30 m³/h.



CT
Roof covers.



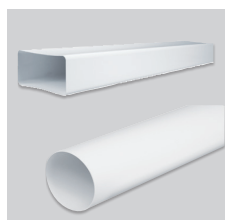
ADRF 100/80
Reducer to connect rigid different diameter ducts.



GPR-ISO
Rigid insulated ducts.



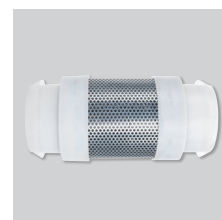
GP GPX GP-PRO GP-ISO
PVC ducts.



TUBREC
Rectangular ducts in flame-retardant plastic.



LAF
Flexible acoustic connection. Length: 0.5 and 1m models.



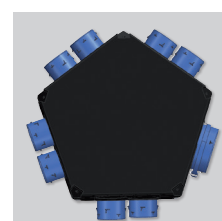
LA
Acoustic connection.



FLEXIREC
Semi-flexible oblong ducts.



PLENUM UNI EXT 6+1
Isolated delivery plenum with outlet Ø 125/150-160 mm, 1 kitchen Ø 125 mm outlet and up to a maximum of 6 bathroom Ø 80 mm outlets.



PLENUM UNI IMP 8
Isolated delivery plenum with suction Ø 125/150-160 mm, and up to a maximum of 8 outlets for dry areas (dining room, living room, bedrooms) Ø 80 mm.