

KB



Rodete de álabes hacia adelante para transporte de material
 Forward curved impeller for material transport

Ventilador centrífugo de acoplamiento directo y simple aspiración. Fabricados en chapa de acero protegida contra la corrosión mediante tratamiento por cataforesis + pintura poliuretana. Temperaturas del aire a transportar -20°C/+60°C en continuo.

Motores

De 2 polos, de alta eficiencia IE 3*, tensión de alimentación trifásica 230/400V 50Hz hasta tamaño motor 132 y 400/690V 50Hz para motores de mayor dimensión. Protección IP55, Clase F.

* A partir de 0,75 kW el motor puede ser de eficiencia IE 2 controlado por convertidor de frecuencia.

Bajo pedido

- Fabricación en diferentes materiales constructivos.
- Motores de 2 velocidades.
- Versiones de 60 Hz.
- Pintura en diferentes RAL.
- Versión sin pie soporte [Motor-Brida, Sistema 5], hasta tamaño de motor 160.
- Versión para alta temperatura: hasta 150°C (versiones B: con rodete de refrigeración).
- SISTEMA 8: acoplamiento mediante junta elástica.

Direct drive, single inlet centrifugal fan. Manufactured from steel sheet protected with cataforesis primer + polyurethane paint finish. Designed to continuously circulate air from -20°C up to 60°C.

Motors

2 pole, IE 3* high efficiency, three-phase 230/400V 50Hz up to motor size 132 and 400/690V 50Hz for higher motors. IP55, Class F protection.

* From 0,75kW, motor can be IE 2 and controlled by VSD.

On request

- Manufactured from different materials.
- 2-speed motors.
- 60 Hz versions.
- Painted in different RAL colour.
- Fan with no supporting stand (Motor-Flange, Arrangement 5), up to motor size 160.
- High-temperature versions (up to 150°C) (B versions: with cooling impeller).
- ARRANGEMENT 8: with joint flexible coupling.
- Inspection door, draining, different seals on scroll and shaft access.

- Trampilla de inspección, purga de drenaje, distintos tipos de estanqueidad a nivel de voluta y de paso de eje.
- Ventiladores estancos.
- Calorifugado.

Versiones ATEX

Bajo pedido, versiones antiexplosivas según la Directiva ATEX para modelos trifásicos:

Para trabajar a temperaturas de -20°C a +60°C, presión ambiente (absoluta) de 0,8 bar hasta 1,1 bar, según EN 14986.

- Gas:
 - ⊗ 2G IIB T2-T3-T4, Motor Exd IIB or Exell
 - ⊗ 2G IIB+H2 T2-T3-T4, Motor ExdIIC
 - ⊗ 3G IIB T2-T3-T4, Motor ExnA (sólo para categoría 3G)
 - ⊗ 3G IIB+H2 T2-T3-T4, Motor ExnA (sólo para categoría 3G)
- Polvo no conductivo:
 - ⊗ 2D IIIB T125°C-T135°C-T195°C-T295°C
 - ⊗ 3D IIIB T125°C-T135°C-T195°C-T295°C
- Polvo conductivo (con motor IP 65):
 - ⊗ 2D IIIC T125°C-T135°C-T195°C-T295°C
 - ⊗ 3D IIIC T125°C-T135°C-T195°C-T295°C

- Welded casing.
- Thermal insulation lagging.

ATEX versions

On request, explosion proof versions in accordance with ATEX directive for three phase models: Ambient temperature -20°C to +60°C, ambient pressure (abs.) 0,8 bar to 1,1 bar according to EN 14986.

- Gas:
 - ⊗ 2G IIB T2-T3-T4, Motor Exd IIB or Exell
 - ⊗ 2G IIB+H2 T2-T3-T4, Motor ExdIIC
 - ⊗ 3G IIB T2-T3-T4, Motor ExnA (only for 3G zone)
 - ⊗ 3G IIB+H2 T2-T3-T4, Motor ExnA (only for 3G zone)
- Non-conductive dust:
 - ⊗ 2D IIIB T125°C-T135°C-T195°C-T295°C
 - ⊗ 3D IIIB T125°C-T135°C-T195°C-T295°C
- Conductive dust (compulsory IP 65 motor):
 - ⊗ 2D IIIC T125°C-T135°C-T195°C-T295°C
 - ⊗ 3D IIIC T125°C-T135°C-T195°C-T295°C

| CUADRO DE APLICACIONES TABLE OF APPLICATIONS | |
|--|--|
| Aire a transportar Air Type | Cantidad de polvo Dust quantity (mg/m ³) |
| Transporte neumático y de material Conveying material and pneumatic transport | < 50000 |

CARACTERÍSTICAS TÉCNICAS / TECHNICAL FEATURES

Es imprescindible comprobar que las características eléctricas (voltaje, intensidad, frecuencia, etc.) del motor que aparecen en la placa del mismo son compatibles con las de la instalación.

Please, check that electrical features (voltage, current, frequency, etc.) are suitable with your installation.

| Modelo Model | Tamaño motor Motor size | Velocidad Speed (r.p.m.) | Potencia motor Motor power (kW) | Intensidad motor 400V Maximum absorbed current 400V (A) | Caudal máximo Maximum airflow (m ³ /h) | Nivel presión sonora a 1 m Sound pressure level at 1 m (dB(A)) ⁽¹⁾ | Peso Weight (kg) ⁽²⁾ | Momento de inercia Moment of inertia (kg·m ²) ⁽³⁾ |
|------------------|----------------------------|--------------------------------|---------------------------------------|--|---|--|---------------------------------------|--|
| 2 POLOS / 2 POLE | | | | | | | | |
| KB 401/2 P4A | 90L2 | 2850 | 2,2 | 4,43 | 1.740 | 79 | 47 | 0,13 |
| KB 451/2 P4A | 100LA2 | 2900 | 3,0 | 5,77 | 2.030 | 82 | 62 | 0,19 |
| KB 451/2 P4A | 112M2 | 2910 | 4,0 | 7,50 | 2.510 | 82 | 67 | 0,19 |
| KB 501/2 P4A | 132SA2 | 2890 | 5,5 | 10,10 | 3.030 | 85 | 99 | 0,34 |
| KB 501/2 P4A | 132SB2 | 2890 | 7,5 | 13,90 | 3.430 | 85 | 105 | 0,34 |
| KB 561/2 P4A | 132MB2 | 2900 | 9,0 | 16,60 | 4.230 | 89 | 138 | 0,60 |
| KB 561/2 P4A | 160MR2 | 2930 | 11,0 | 18,70 | 4.790 | 89 | 161 | 0,60 |
| KB 631/2 P4A | 160L2 | 2935 | 15,0 | 25,40 | 5.290 | 93 | 196 | 1,10 |
| KB 631/2 P4A | 160M2 | 2935 | 18,5 | 33,30 | 6.870 | 93 | 206 | 1,10 |
| KB 711/2 P4A | 180M2 | 2940 | 22,0 | 39,00 | 5.770 | 96 | 256 | 1,70 |
| KB 711/2 P4A | 200L2 | 2960 | 30,0 | 53,50 | 8.110 | 96 | 368 | 1,70 |
| KB 711/2 P4A | 200LR2 | 2960 | 37,0 | 65,60 | 10.050 | 96 | 376 | 1,70 |
| KB 802/2 P4A | 200L2 | 2960 | 37,0 | 65,60 | 7.710 | 100 | 419 | 3,00 |
| KB 801/2 P4A | 225M2 | 2960 | 45,0 | 77,60 | 9.380 | 101 | 475 | 3,20 |
| KB 801/2 P4A | 250M2 | 2960 | 55,0 | 93,50 | 14.430 | 101 | 557 | 3,20 |
| 4 POLOS / 4 POLE | | | | | | | | |
| KB 802/4 P4A | 132MA4 | 1450 | 7,5 | 13,90 | 3.740 | 81 | 253 | 3,00 |
| KB 801/4 P4A | 132MB4 | 1450 | 9,2 | 17,40 | 7.070 | 82 | 273 | 3,10 |
| KB 902/4 P4A | 160M4 | 1450 | 11,0 | 20,70 | 7.630 | 84 | 443 | 4,80 |
| KB 901/4 P4A | 160L4 | 1450 | 15,0 | 28,40 | 9.890 | 85 | 481 | 5,50 |
| KB 1002/4 P4A | 180L4 | 1470 | 18,5 | 34,90 | 10.800 | 88 | 590 | 7,80 |
| KB 1001/4 P4A | 180M4 | 1470 | 22,0 | 40,90 | 13.930 | 89 | 650 | 8,80 |

¹ Entubado en la descarga / Piping only on outlet side

Tolerancia del nivel de ruido de +3dB/A, medido en el punto de máxima eficiencia / Noise level tolerance +3 dB/A, measured in the maximum efficiency point

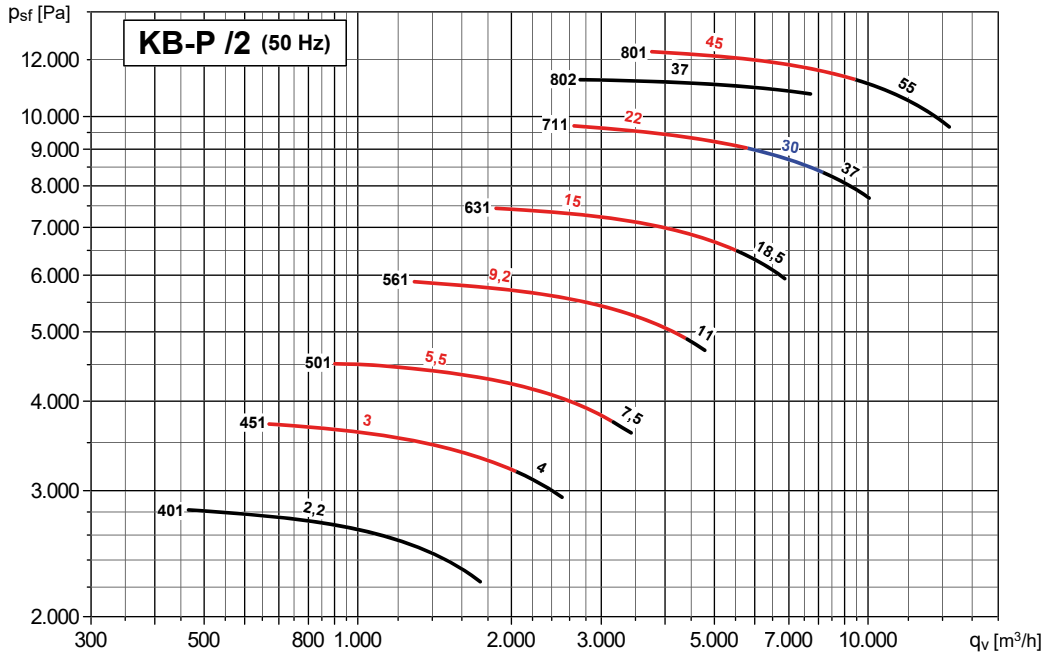
² Con motor incluido y para orientación LG270 ó RD270 / With motor included and for LG270 or RD270 position

³ Momento de inercia del rodetes / Impeller's moment of inertia

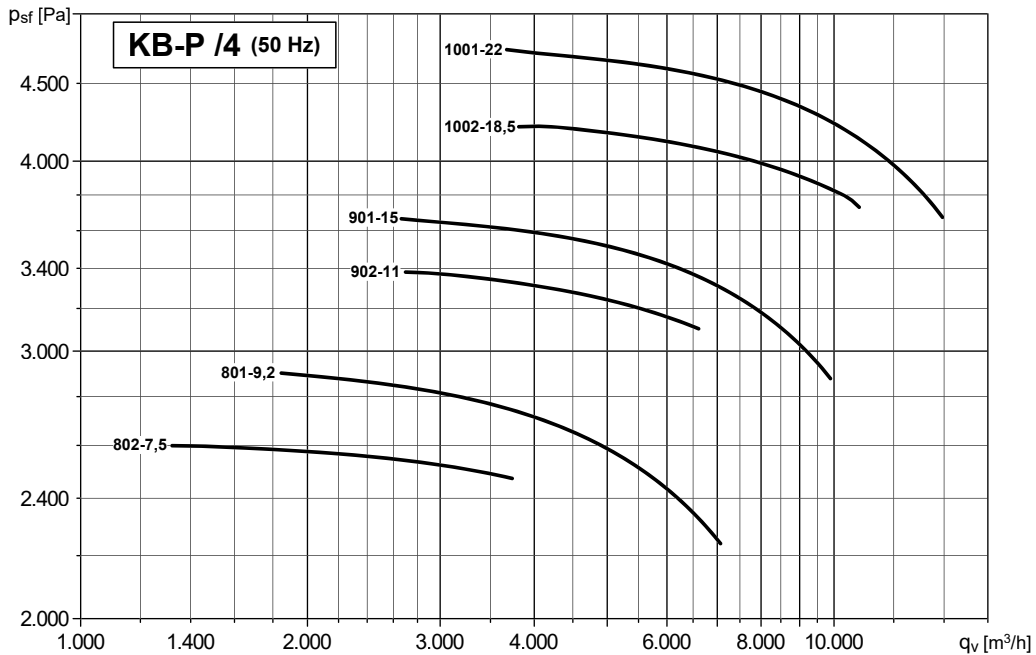
CURVAS CARACTERÍSTICAS (a la descarga) / PERFORMANCE CURVES (at outlet)

- Ventiladores ensayados con la aspiración y la descarga entubadas. - Fan ducted on both inlet and outlet sides.
- Caudal en m³/h. - Air volume in m³/h.
- **Psf: Presión estática en Pa.** - **Psf: Static pressure in Pa.**
- Modelo - Potencia motor en kW. - Model - Motor power in kW.
- Ejemplo: 711 - 22, 30 ó 37 - Example: 711 - 22, 30 ó 37
- Modelo - kW Model - kW

2 polos - Modelos desde 401 hasta 801
 2 pole - Models from 401 to 801



4 polos - Modelos desde 801 hasta 1001
 4 pole - Models from 801 to 1001



RODETE ÁLABES PARA HACIA ADELANTE TRANSPORTE DE MATERIAL - ACOPLAMIENTO DIRECTO FORWARD CURVED IMPELLER FOR MATERIAL TRANSPORT - DIRECT DRIVE



DIMENSIONES (mm) / DIMENSIONS (mm)

DESCARGA ORIENTABLE
DISCHARGE ADJUSTABLE

EJECUCIÓN B
Con rodete de refrigeración,
contactar con oficina técnica.

CONFIGURATION B
With cooling impeller, please
contact our technical office.

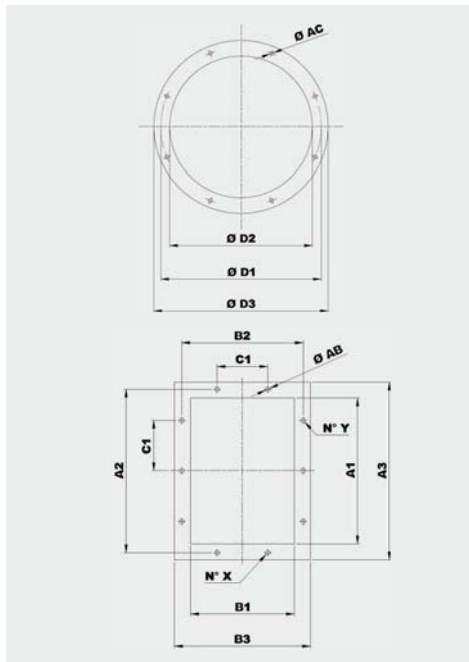
ORIENTACIONES / POSITIONS

| | | | | | | | | |
|----|----|-----|-----|------|------|------|------|------|
| LG | 0° | 45° | 90° | 135° | 180° | 225° | 270° | 315° |
| | | | | | | | | |
| RD | 0° | 45° | 90° | 135° | 180° | 225° | 270° | 315° |
| | | | | | | | | |
| | H | H1 | | | H2 | | | H1 |

Para los ventiladores con orientaciones 180° y 225°, contactar con oficina técnica
For fans with 180° and 225° positions, please contact our technical office

| Tipo Type | Ventilador Fan | Motor GR Motor GR | Ventilador Fan | | | | | | | | | | | Base Base | | | | | | | | |
|---------------|-------------------|----------------------|-------------------|-----|-----|------|-----|-----|-----|-----|-----|------|-------|--------------|------|-----|-----|-----|----|-----|----|------|
| | | | A* | B | C | Ø D1 | E | F | G | H | | HT | mxl | Y | LT | L | P | M | Q | R | S | Ø AA |
| KB 401/2 P4A | 90L2 | | 450 | 310 | 285 | 219 | 238 | 280 | 67 | 375 | 280 | 660 | M6X20 | 122 | 590 | 260 | 234 | 260 | 60 | 183 | 17 | 10 |
| KB 451/2 P4A | 100LA2 | | 490 | 345 | 315 | 241 | 266 | 300 | 74 | 400 | 300 | 715 | M6X20 | 93 | 645 | 324 | 289 | 295 | 23 | 249 | 23 | 12 |
| KB 451/2 P4A | 112M2 | | 530 | 345 | 315 | 241 | 266 | 300 | 74 | 400 | 300 | 715 | M6X20 | 93 | 645 | 324 | 289 | 310 | 23 | 264 | 23 | 12 |
| KB 501/2 P4A | 132SA2 | | 570 | 380 | 350 | 265 | 298 | 335 | 83 | 450 | 335 | 800 | M6X20 | 100 | 715 | 372 | 337 | 360 | 23 | 314 | 23 | 12 |
| KB 501/2 P4A | 132SB2 | | 570 | 380 | 350 | 265 | 298 | 335 | 83 | 450 | 335 | 800 | M6X20 | 100 | 715 | 372 | 337 | 360 | 23 | 314 | 23 | 12 |
| KB 561/2 P4A | 132MB2 | | 625 | 430 | 390 | 292 | 338 | 375 | 92 | 500 | 375 | 890 | M8X25 | 109 | 805 | 372 | 337 | 360 | 23 | 314 | 23 | 12 |
| KB 561/2 P4A | 160MR2 | | 710 | 430 | 390 | 292 | 338 | 375 | 92 | 500 | 375 | 890 | M8X25 | 114 | 805 | 440 | 395 | 470 | 28 | 414 | 28 | 14 |
| KB 631/2 P4A | 160L2 | | 730 | 485 | 440 | 332 | 381 | 425 | 101 | 560 | 425 | 1000 | M8X25 | 125 | 910 | 440 | 395 | 470 | 28 | 414 | 28 | 14 |
| KB 631/2 P4A | 160M2 | | 730 | 485 | 440 | 332 | 381 | 425 | 101 | 560 | 425 | 1000 | M8X25 | 125 | 910 | 440 | 395 | 470 | 28 | 414 | 28 | 14 |
| KB 711/2 P4A | 180M2 | | 800 | 540 | 490 | 366 | 426 | 475 | 115 | 630 | 475 | 1120 | M8X25 | 141 | 1015 | 488 | 434 | 540 | 33 | 474 | 33 | 17 |
| KB 711/2 P4A | 200L2 | | 925 | 540 | 490 | 366 | 426 | 475 | 115 | 630 | 475 | 1120 | M8X25 | 188 | 1015 | 568 | 506 | 515 | 80 | 396 | 39 | 19 |
| KB 711/2 P4A | 200LR2 | | 925 | 540 | 490 | 366 | 426 | 475 | 115 | 630 | 475 | 1120 | M8X25 | 188 | 1015 | 568 | 506 | 515 | 80 | 396 | 39 | 19 |
| KB 801/2 P4A | 225M2 | | 975 | 610 | 550 | 405 | 481 | 530 | 127 | 710 | 530 | 1260 | M8X25 | 200 | 1140 | 616 | 556 | 564 | 80 | 445 | 39 | 19 |
| KB 801/2 P4A | 250M2 | | 1040 | 610 | 550 | 405 | 481 | 530 | 127 | 710 | 530 | 1260 | M8X25 | 210 | 1140 | 676 | 604 | 624 | 90 | 490 | 44 | 19 |
| KB 801/4 P4A | 132MB4 | | 670 | 610 | 550 | 405 | 481 | 530 | 127 | 710 | 530 | 1260 | M8X25 | 143 | 1140 | 372 | 337 | 360 | 23 | 314 | 23 | 12 |
| KB 802/2 P4A | 200L2 | | 950 | 610 | 550 | 405 | 481 | 530 | 127 | 710 | 530 | 1260 | M8X25 | 200 | 1140 | 568 | 506 | 524 | 80 | 405 | 39 | 19 |
| KB 802/4 P4A | 132MA4 | | 670 | 610 | 550 | 405 | 481 | 530 | 127 | 710 | 530 | 1260 | M8X25 | 143 | 1140 | 372 | 337 | 360 | 23 | 314 | 23 | 12 |
| KB 901/4 P4A | 160L4 | | 925 | 685 | 620 | 448 | 542 | 600 | 139 | 800 | 600 | 1420 | M8X25 | 163 | 1285 | 440 | 395 | 470 | 28 | 414 | 28 | 14 |
| KB 902/4 P4A | 160M4 | | 925 | 685 | 620 | 448 | 542 | 600 | 139 | 800 | 600 | 1420 | M8X25 | 163 | 1285 | 440 | 395 | 470 | 28 | 414 | 28 | 14 |
| KB 1001/4 P4A | 180L4 | | 1070 | 760 | 690 | 497 | 607 | 670 | 160 | 900 | 670 | 1590 | M8X25 | 185 | 1430 | 488 | 434 | 540 | 33 | 474 | 33 | 17 |
| KB 1002/4 P4A | 180M4 | | 1070 | 760 | 690 | 497 | 607 | 670 | 160 | 900 | 670 | 1590 | M8X25 | 185 | 1430 | 488 | 434 | 540 | 33 | 474 | 33 | 17 |

* Según tamaño motor / Depending on motor size

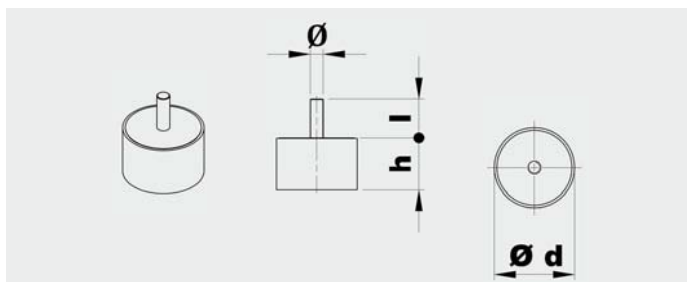


| Modelo Model | Brida aspiración Inlet flange | | | | | |
|-----------------|----------------------------------|------|------|------|------|-------------------|
| | Tipo brida Bride type | Ø D1 | Ø D2 | Ø D3 | Ø AC | Agujeros Holes |
| 401 | 180 | 184 | 219 | 254 | 8 | 8 |
| 451 | 200 | 204 | 241 | 274 | 8 | 8 |
| 501 | 224 | 228 | 265 | 298 | 8 | 8 |
| 561 | 250 | 254 | 292 | 324 | 10 | 8 |
| 631 | 280 | 285 | 332 | 365 | 10 | 8 |
| 711 | 315 | 320 | 366 | 400 | 10 | 8 |
| 801 | 355 | 360 | 405 | 440 | 10 | 8 |
| 901 | 400 | 405 | 448 | 485 | 10 | 12 |
| 1001 | 450 | 455 | 497 | 535 | 10 | 12 |

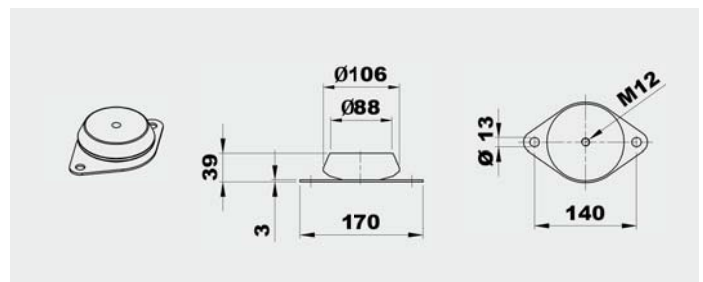
| Modelo Model | Brida descarga Discharge flange | | | | | | | | | | |
|-----------------|------------------------------------|-----|-----|-----|-----|-----|-----|-----|------|-----|-----|
| | Tipo brida Bride type | A1 | B1 | A2 | B2 | A3 | B3 | C1 | Ø AB | N°X | N°Y |
| 401 | 160x112 | 164 | 117 | 200 | 151 | 234 | 187 | 112 | 12 | 1+1 | 2+2 |
| 451 | 180x125 | 183 | 131 | 219 | 165 | 253 | 201 | 112 | 12 | 1+1 | 2+2 |
| 501 | 200x140 | 205 | 146 | 241 | 182 | 275 | 216 | 112 | 12 | 2+2 | 2+2 |
| 561 | 224x160 | 229 | 164 | 265 | 200 | 299 | 234 | 112 | 12 | 2+2 | 2+2 |
| 631 | 250x180 | 256 | 183 | 292 | 219 | 326 | 253 | 112 | 12 | 2+2 | 3+3 |
| 711 | 280x200 | 288 | 205 | 332 | 249 | 368 | 285 | 125 | 12 | 2+2 | 3+3 |
| 801 | 315x224 | 322 | 229 | 366 | 273 | 402 | 309 | 125 | 12 | 2+2 | 3+3 |
| 901 | 355x250 | 361 | 256 | 405 | 300 | 441 | 336 | 125 | 12 | 2+2 | 3+3 |
| 1001 | 400x280 | 404 | 288 | 448 | 332 | 484 | 368 | 125 | 12 | 3+3 | 4+4 |

AMORTIGUADORES / SILENT BLOCKS

| Amortiguadores recomendados / Suggested silent blocks | |
|---|-----------------------------|
| Ventilador / Fan | Ejecución 4 / Arrangement 4 |
| 401 | 4 x AM 25 - 25 x 20 |
| 451 | 4 x AM 25 - 25 x 20 |
| 501 | 4 x AM 30 - 30 x 30 |
| 561 | 4 x AM 30 - 30 x 30 |
| 631 | 4 x AM 40 - 40 x 30 |
| 711 | 4 x AM 50 - 50 x 40 |
| 801 | 4 x AM 75 - 75 x 50 |
| 901 | 4 x AM 75 - 75 x 50 |
| 1001 | 4 x AZ 39 - 140 x 39 |



| Tipo Type | Carga para 4 soportes / Load for 4 supports (kg) | d | h | Ø | l | Peso / Weight (kg) |
|--------------|--|----|----|-----|----|--------------------------|
| AM20 | 11÷40 | 20 | 20 | M6 | 15 | 0,02 |
| AM25 | 41÷80 | 25 | 20 | M6 | 18 | 0,03 |
| AM30 | 81÷140 | 30 | 30 | M8 | 20 | 0,05 |
| AM40 | 141÷224 | 40 | 30 | M8 | 23 | 0,10 |
| AM50 | 225÷315 | 50 | 40 | M10 | 28 | 0,20 |
| AM75 | 316÷630 | 75 | 50 | M12 | 37 | 0,50 |

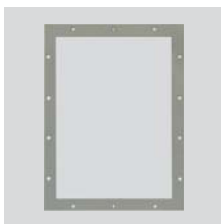


| Tipo Type | Carga para 4 soportes Load for 4 supports (kg) | Peso Weight (kg) |
|--------------|--|------------------------|
| AZ 39 | 631÷1250 | 0,7 |

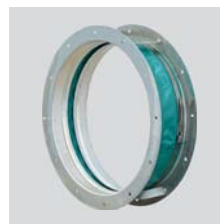
ACCESORIOS / ACCESSORIES



CA (CFH1) - CFH2 - CFH3
 Contrabrida -
 Brida plana circular.
*Counter-flange -
 Circular flange.*



CP
 Brida plana
 rectangular.
Rectangular Flange.



GA
 Junta flexible
 aspiración.
*Inlet flexible
 connector.*



GP
 Junta flexible
 descarga.
*Outlet flexible
 connector.*



DP
 Regulador de caudal
 de aspiración.
*Inlet damper
 governor.*



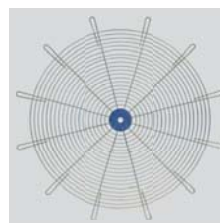
SAD
 Compuerta de
 regulación de caudal
 de descarga.
*Air reducing damper
 at outlet.*



SF
 Válvula mariposa.
Throttle valve.



DF
 Filtro en la
 aspiración.
Air filter at inlet.



RC
 Rejilla de protección
 para la aspiración.
Protection net.



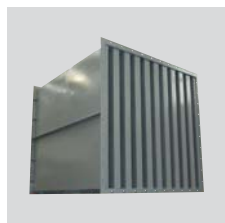
AM/AZ
 Soportes
 antivibratorios.
Silent blocks.



SCSO
 Silenciador
 cilíndrico.
*Cylindrical sound
 attenuator.*



SCCO
 Silenciador cilíndrico
 con bulbo.
*Cylindrical sound
 attenuator with
 internal pot.*



SASS
 Silenciador
 rectangular.
*Baffle type sound
 attenuator.*



CI
 Cabina de
 insonorización.
Noise enclosure.

Ver información completa en "Accesorios de montaje".
 For more information see "Mounting accessories".