



Roof mounted axial flow fans, with vertical air discharge configuration, for smoke extract in fire conditions. F300/F200-120 and F400-120 certification for dual purpose as per EN 12101-3, CE marked.

Casing formed from rolled sheet steel welded on the base with a corrosion resistant hot dipped galvanized finish to EN 1461. Corrosion category C4.

Backdraft shutter and bird proof outlet guard. Cylindrical casing formed from rolled sheet steel protected against corrosion by grey polyester paint coating. Corrosion category C3H.

Variable pitch angle impeller, dynamically balanced to ISO 14694: G6.3, made from high grade aluminum blades locked within a pressed sheet steel hub.

Electrical isolator IP65 fitted to fan casing. Three phase motor, IP55, Class H. Standard operation temperature range -20°C to +40°C.

Motors

Single speed 4 pole.
Two speed 4/8 pole.
IE3 efficiency category from 0,75kW onwards, IE2 minimum for lower kW motors. Not applicable to 8 pole or two speed motors.
220-240/380-415V-50Hz up to 3 kW.
380-415V-50Hz, for higher power motors and two speed motors.
Suitable for inverter control.
In emergency operation, no need for DOL or de-rating, as long as the VFTM range of VSDs is used, and/or requirements defined in EN 12101-3 are followed. (60Hz version available in EasyVent).

Specific applications



F400-120
Officially approved to EN12101-3 standard. Certificate n° 0370-CPR-6216



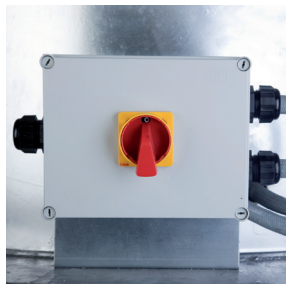
F300/F200-120
Officially approved to EN12101-3 standard. Certificate n° 0370-CPR-6213



Car parks



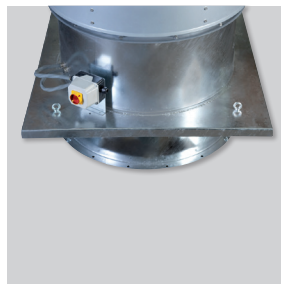
Warehouses



Isolator
IP65 electrical isolator.



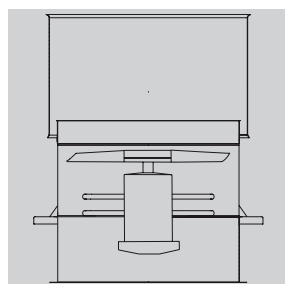
Outlet guard
Outlet guard protection.



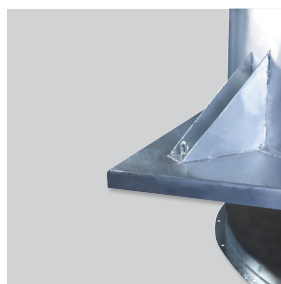
Support base
Base for roof installation, welded at the casing for watertightness.



Inlet flange
Flange for duct connection or bellmouth inlet.



Form (A) configuration
Standard air direction: form (A) configuration (Motor over impeller).



Web support
To strengthen base support. Model 1250 only.

Additional information

Standard air direction Motor-Impeller (Form A).

On request

Single speed 6 pole motors.
Two speed motors in 4/6 and 6/12 poles.
Motors with PTC thermistor or heating resistors.
Paint finish.

Check EasyVent to select the most suitable configuration for the installation, and obtain the corresponding datasheet.



Back draught shutter
Prevent back draught of air and entrance of rain water when the fan is switched off.

TECHNICAL CHARACTERISTICS

Before installation check that the product electrical characteristics listed on the data plate label (voltage, power, frequency, etc.) match those of the intended electrical supply.

We reserve the right to use different motor suppliers, therefore the following data may differ.

TECHNICAL CHARACTERISTICS - F300/F200 120 & F400 120 - 4 POLES

Model	Diameter (mm)	Motor power	Full load current at 400V (A)	Weight (kg)
HGHT-V/4-800-6/-1,5	800	1,5	3,17	170
HGHT-V/4-800-6/-2,2	800	2,2	4,56	179
HGHT-V/4-800-6/-3	800	3	6,15	185
HGHT-V/4-800-6/-4	800	4	8,03	191
HGHT-V/4-800-6/-5,5	800	5,5	10,4	213
HGHT-V/4-800-6/-7,5	800	7,5	13,9	221

HGHT-V/4-800-9/-2,2	800	2,2	4,56	184
HGHT-V/4-800-9/-3	800	3	6,15	190
HGHT-V/4-800-9/-4	800	4	8,03	196
HGHT-V/4-800-9/-5,5	800	5,5	10,4	218
HGHT-V/4-800-9/-7,5	800	7,5	13,9	226

HGHT-V/4-900-6/-11	900	11	20,9	302
HGHT-V/4-900-6/-3	900	3	6,15	227
HGHT-V/4-900-6/-4	900	4	8,03	233
HGHT-V/4-900-6/-5,5	900	5,5	10,4	255
HGHT-V/4-900-6/-7,5	900	7,5	13,9	263

HGHT-V/4-900-9/-11	900	11	20,9	308
HGHT-V/4-900-9/-15	900	15	27,9	330
HGHT-V/4-900-9/-5,5	900	5,5	10,4	261
HGHT-V/4-900-9/-7,5	900	7,5	13,9	269

Model	Diameter (mm)	Motor power	Full load current at 400V (A)	Weight (kg)
HGHT-V/4-1000-6/-11	1000	11	20,9	317
HGHT-V/4-1000-6/-15	1000	15	27,9	339
HGHT-V/4-1000-6/-18,5	1000	18,5	35,1	372
HGHT-V/4-1000-6/-4	1000	4	8,03	248
HGHT-V/4-1000-6/-5,5	1000	5,5	10,4	270
HGHT-V/4-1000-6/-7,5	1000	7,5	13,9	278

HGHT-V/4-1000-9/-11	1000	11	20,9	324
HGHT-V/4-1000-9/-15	1000	15	27,9	346
HGHT-V/4-1000-9/-18,5	1000	18,5	35,1	379
HGHT-V/4-1000-9/-22	1000	22	41	396
HGHT-V/4-1000-9/-7,5	1000	7,5	13,9	285

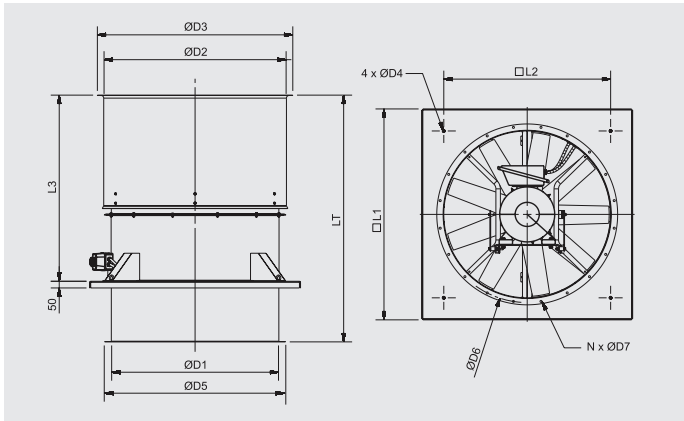
HGHT-V/4-1250-6/-15	1250	15	27,9	463
HGHT-V/4-1250-6/-18,5	1250	18,5	35,1	496
HGHT-V/4-1250-6/-22	1250	22	41	513
HGHT-V/4-1250-6/-30	1250	30	57,1	556
HGHT-V/4-1250-6/-37	1250	37	66,8	693
HGHT-V/4-1250-6/-45	1250	45	80,9	728

HGHT-V/4-1250-9/-15	1250	15	27,9	473
HGHT-V/4-1250-9/-18,5	1250	18,5	35,1	506
HGHT-V/4-1250-9/-22	1250	22	41	523
HGHT-V/4-1250-9/-30	1250	30	57,1	566
HGHT-V/4-1250-9/-37	1250	37	66,8	703
HGHT-V/4-1250-9/-45	1250	45	80,9	738

TECHNICAL CHARACTERISTICS - F300/F200 120 & F400 120 - 4/8 POLES

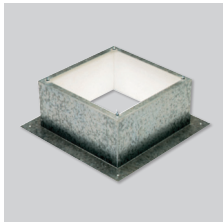
Model	Diameter (mm)	Motor power		Full load current 400V (A)		Weight (kg)	Model	Diameter (mm)	Motor power		Full load current 400V (A)		Weight (kg)
		HS	LS	HS	LS				HS	LS	HS	LS	
HGHT-V/4/8-800-6/-1,5/0,25	800	1,5	0,25	3,65	1,6	177	HGHT-V/4/8-1000-6/-11/3	1000	11	3	21	7	316
HGHT-V/4/8-800-6/-2,2/0,37	800	2,2	0,37	4,7	1,66	185	HGHT-V/4/8-1000-6/-14/3,5	1000	14	3,5	26,5	8,45	335
HGHT-V/4/8-800-6/-3/0,55	800	3	0,55	6,29	2,35	186	HGHT-V/4/8-1000-6/-17/4,3	1000	17	4,3	33,4	12,7	366
HGHT-V/4/8-800-6/-4/0,75	800	4	0,75	8,44	2,25	193	HGHT-V/4/8-1000-6/-20/5	1000	20	5	38,6	14,1	381
HGHT-V/4/8-800-6/-5,5/1,1	800	5,5	1,1	11,7	3,7	215	HGHT-V/4/8-1000-6/-4/0,75	1000	4	0,75	8,44	2,25	250
HGHT-V/4/8-800-6/-7,5/1,5	800	7,5	1,5	15,9	4,72	228	HGHT-V/4/8-1000-6/-5,5/1,1	1000	5,5	1,1	11,7	3,7	272
							HGHT-V/4/8-1000-6/-7,5/1,5	1000	7,5	1,5	15,9	4,72	285
HGHT-V/4/8-800-9/-2,2/0,37	800	2,2	0,37	4,7	1,66	190	HGHT-V/4/8-1000-9/-11/3	1000	11	3	21	7	323
HGHT-V/4/8-800-9/-3/0,55	800	3	0,55	6,29	2,35	191	HGHT-V/4/8-1000-9/-14/3,5	1000	14	3,5	26,5	8,45	342
HGHT-V/4/8-800-9/-4/0,75	800	4	0,75	8,44	2,25	198	HGHT-V/4/8-1000-9/-17/4,3	1000	17	4,3	33,4	12,7	373
HGHT-V/4/8-800-9/-5,5/1,1	800	5,5	1,1	11,7	3,7	220	HGHT-V/4/8-1000-9/-20/5	1000	20	5	38,6	14,1	388
HGHT-V/4/8-800-9/-7,5/1,5	800	7,5	1,5	15,9	4,72	233	HGHT-V/4/8-1000-9/-5,5/1,1	1000	5,5	1,1	11,7	3,7	279
							HGHT-V/4/8-1000-9/-7,5/1,5	1000	7,5	1,5	15,9	4,72	292
HGHT-V/4/8-900-6/-11/3	900	11	3	21	7	301	HGHT-V/4/8-1250-6/-11/3	1250	11	3	21	7	440
HGHT-V/4/8-900-6/-2,2/0,37	900	2,2	0,37	4,7	1,66	227	HGHT-V/4/8-1250-6/-14/3,5	1250	14	3,5	26,5	8,45	459
HGHT-V/4/8-900-6/-3/0,55	900	3	0,55	6,29	2,35	228	HGHT-V/4/8-1250-6/-17/4,3	1250	17	4,3	33,4	12,7	490
HGHT-V/4/8-900-6/-4/0,75	900	4	0,75	8,44	2,25	235	HGHT-V/4/8-1250-6/-20/5	1250	20	5	38,6	14,1	505
HGHT-V/4/8-900-6/-5,5/1,1	900	5,5	1,1	11,7	3,7	257	HGHT-V/4/8-1250-6/-28/6,5	1250	28	6,5	52	18	563
HGHT-V/4/8-900-6/-7,5/1,5	900	7,5	1,5	15,9	4,72	270	HGHT-V/4/8-1250-6/-30/8	1250	30	8	56,5	21,8	593
							HGHT-V/4/8-1250-6/-37/9,2	1250	37	9,2	74,2	25,4	696
HGHT-V/4/8-900-9/-11/3	900	11	3	21	7	307	HGHT-V/4/8-1250-6/-44/11	1250	44	11	80,2	27,2	753
HGHT-V/4/8-900-9/-14/3,5	900	14	3,5	26,5	8,45	326	HGHT-V/4/8-1250-9/-14/3,5	1250	14	3,5	26,5	8,45	469
HGHT-V/4/8-900-9/-4/0,75	900	4	0,75	8,44	2,25	241	HGHT-V/4/8-1250-9/-17/4,3	1250	17	4,3	33,4	12,7	500
HGHT-V/4/8-900-9/-5,5/1,1	900	5,5	1,1	11,7	3,7	263	HGHT-V/4/8-1250-9/-20/5	1250	20	5	38,6	14,1	515
HGHT-V/4/8-900-9/-7,5/1,5	900	7,5	1,5	15,9	4,72	276	HGHT-V/4/8-1250-9/-28/6,5	1250	28	6,5	52	18	573
							HGHT-V/4/8-1250-9/-30/8	1250	30	8	56,5	21,8	603
							HGHT-V/4/8-1250-9/-37/9,2	1250	37	9,2	74,2	25,4	706
							HGHT-V/4/8-1250-9/-44/11	1250	44	11	80,2	27,2	763

DIMENSIONS (mm)



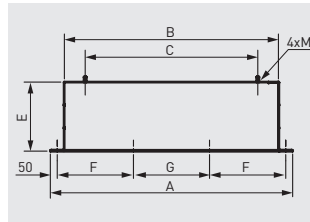
HGTT-V	D1	D2	D3	D4	D5	D6	D7	N	L1	L2	L3	LT
800	800	912	1012	14	890	860	12	16	1100	840	1015	1198
900	900	1013	1113	14	1005	970	15	16	1250	950	1135	1463
1000	1000	1113	1213	14	1105	1070	15	16	1270	950	1215	1543
1250	1250	1364	1464	16	1355	1320	15	20	1580	1250	1394	1848

MOUNTING ACCESSORIES



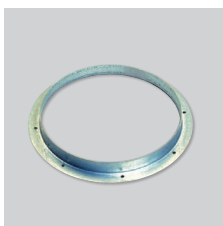
JBS-V Flat roof up stand

- For mounting a fan on a flat roof without up stands.
- For use on horizontal roofs.
- Internal insulation to prevent condensation.
- Supplied with screws and gasket for a complete weather seal.

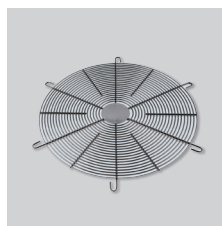


Model	A	B	C	E	F	G	M
JBS-V-800	1279	1079	840	300	393	393	M12
JBS-V-900	1430	1230	950	400	443	444	M12
JBS-V-1000	1447	1247	950	400	449	449	M12
JBS-V-1250	1755	1555	1250	500	552	551	M16

Model	Matching Flange	Inlet bellmouth	Flexible connector	Inlet guard	Circular sound attenuator	Attenuator with acoustic pod
800	ARO BRIDA TGT/ THGT- 800 N	EMB- 800T	ACOPEL F400-800/300 N	DEF.ASP.TGT/THGT- 800	SIL CZ 800	SIL CZO 800
900	ARO BRIDA TGT/ THGT- 900 N	EMB- 900T	ACOPEL F400-900/300 N	DEF.ASP.TGT/THGT- 900	SIL CZ 900	SIL CZO 900
1000	ARO BRIDA TGT/ THGT- 1000 N	EMB- 1000T	ACOPEL F400-1000/300 N	DEF.ASP.TGT/THGT- 1000	SIL CZ 1000	SIL CZO 1000
1250	ARO BRIDA TGT/ THGT- 1250 N	EMB- 1250T	ACOPEL F400-1250/300 N	DEF.ASP.TGT/THGT- 1250	SIL CZ 1250	SIL CZO 1250



ARO BRIDA TGT/THGT N
Matching flange.



DEF.ASP.TGT/THGT
Inlet guard.



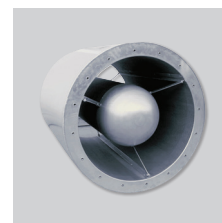
SIL CZ
Circular silencer.



ACOPEL F400 N
Circular flexible connector.
Certified F400-120.



EMB
Bellmouth with guard.



SIL CZO
Circular silencer with pod.

For more information see Mounting accessories.