



Heat recovery unit with high efficiency heat exchanger up to 94%.
 Its main feature is the possibility to be adapted to all configurations. The construction with independent modules allows high flexibility and several fitting options.
 It can be mounted on the floor and on the ceiling. On the wall it can be mounted in vertical or horizontal position.
 Its low profile (300 mm) allows fitting into false ceiling. It can be equipped with a 100% bypass, maintaining its low profile. To ensure good air quality, is equipped with a F5 filter on the inlet side and, to protect the core, a G4 on the extraction side.
 With its remote control, it is possible to manage the boost function, the bypass and the filters reset alarm.

Models

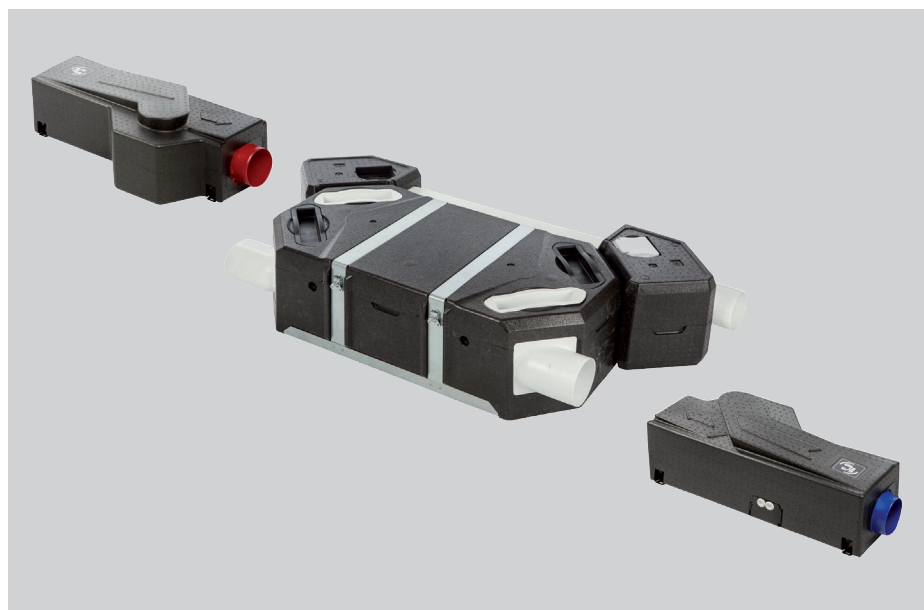
FLEXEO BP FL 3V: Cable remote control.
 FLEXEO BP RD 3V: Radio frequency remote control.

Configuration

- Counter flow heat exchanger.
- EPP body.
- Spigots pivoting to 90°.
- Fan modules x 2
- 100% bypass, automatic or manual.
- Manual boost function.
- Inlet filter:
 M5 (ISO ePM10 50%, at 210m³/h).
 Option, F7 (ISO ePM1 50%, at 210 m³/h).
- Extraction filter G4 (ISO coarse 60%, at 210m³/h).
- Wall or ceiling mounting kit
- Opening for access to the core by quarter turn fasteners.



MOUNTING FLEXIBILITY



FLEXEO consists of independent modules, which allow multiple configurations.

Specific applications



Single dwellings



Multi dwelling blocks



Heat recovery unit

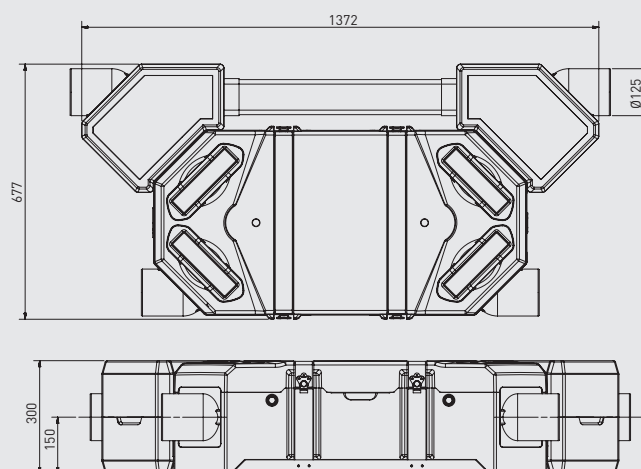


Remote control by cable or wireless:

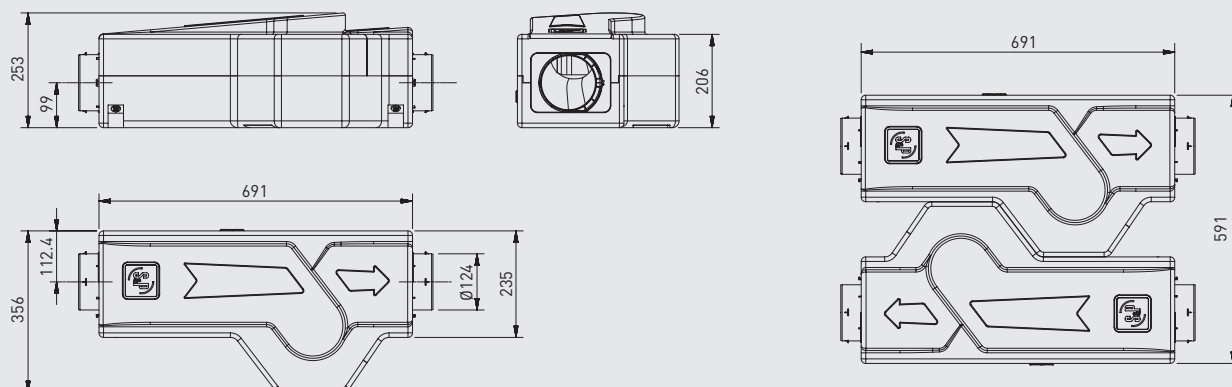
- Bypass
- Boost
- Absence mode
- Filter reset

DIMENSIONS (mm)

Heat recovery module FLEXEO BP (with bypass)



Fan modules



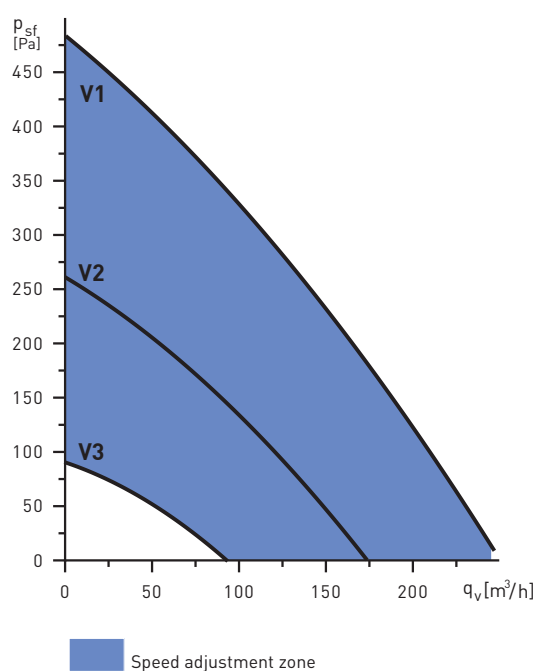
TECHNICAL CHARACTERISTICS

Model	Air connections (mm)	Voltage (V)	Maximum airflow at 100Pa (m³/h)	Absorbed power (W)	Maximum Efficiency (%)
FLEXEO BP FL 3V	125	230	210	100	94
FLEXEO BP RD 3V	125	230	210	100	94

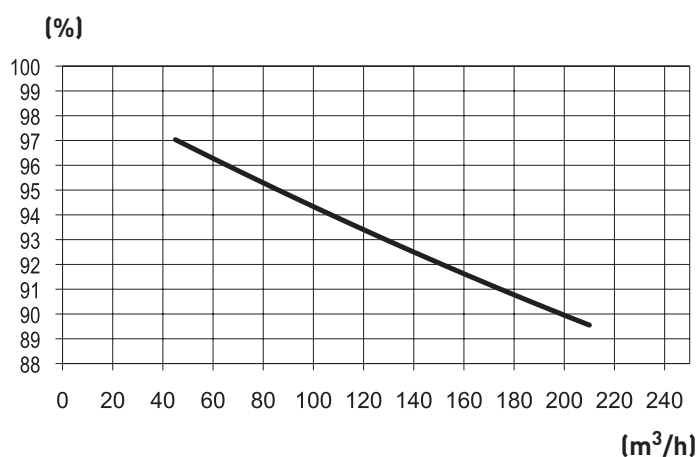
ACOUSTIC DATA

Sound pressure, at 3 m distance [210 m³/h @ 100 Pa]									
Hz	63	125	250	500	1000	2000	4000	8000	TOTAL dB(A)
OUTLET	2,4	12	15,5	32,9	17,6	10,3	3	2,3	31,8
INLET	10	13,5	17	27,5	22,3	14,5	5,9	2,5	28,4
RADIATED	4,5	10,4	30	35,6	28,9	28	31,8	19	43

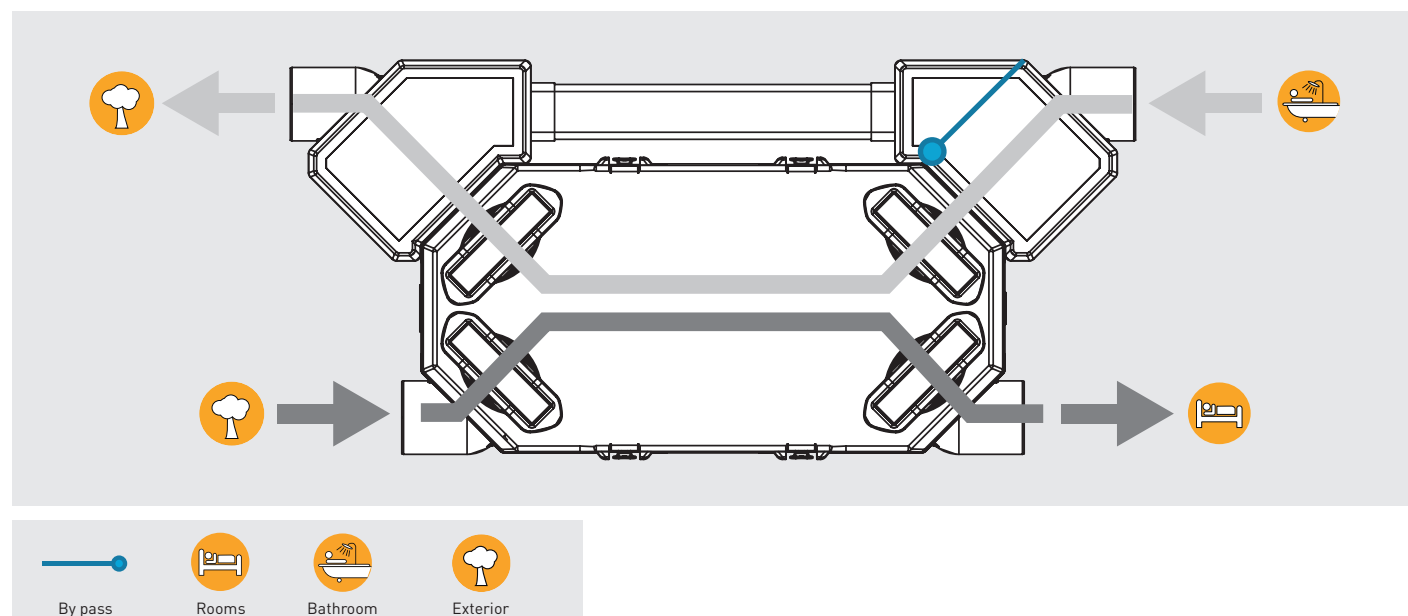
PERFORMANCE CURVES



EFFICIENCY CURVE

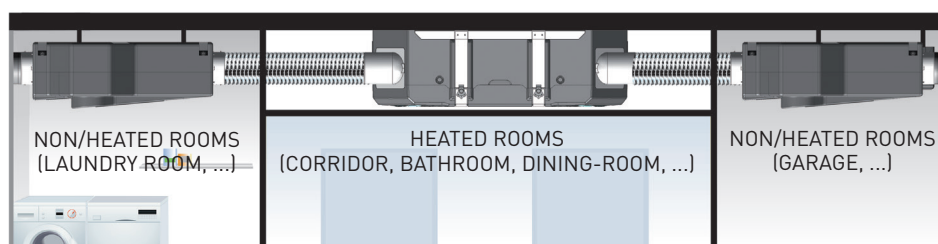
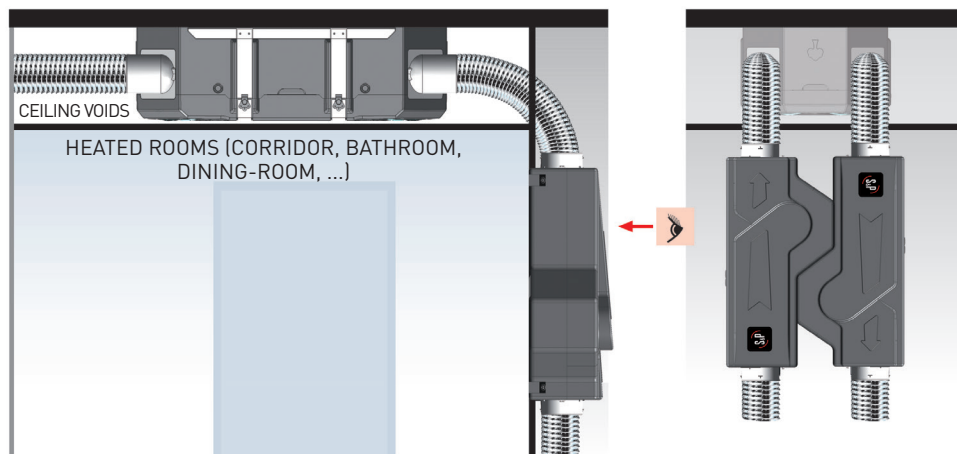
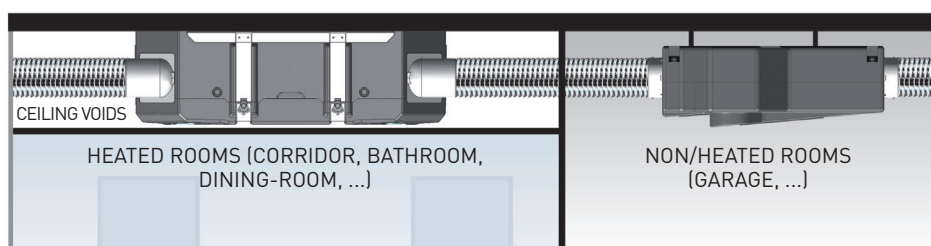
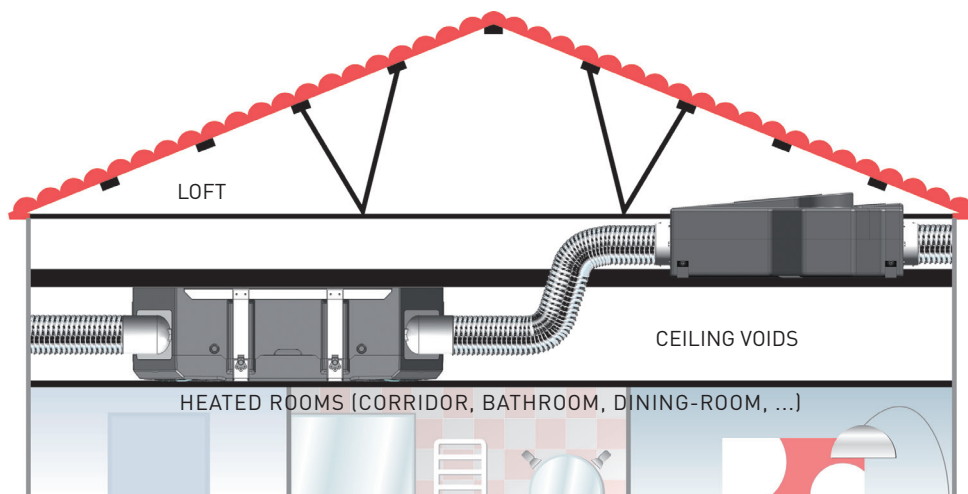


AIRFLOW DIRECTION



INSTALLATION IN SINGLE DWELLINGS

The different parts (fans and exchanger) can be installed in different areas in order to improve performance and reduce noise.



FLEXEO SERIES - EXAMPLE OF INSTALLATION IN SINGLE DWELLINGS

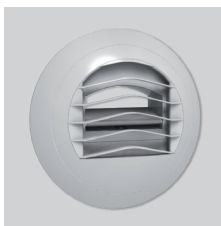


1. Wall mounted air inlet grille TAP.
2. Supply and extraction valves BDOP.
3. Self-adjusting extraction valve BARJ / BARP
4. Flexible insulated duct GP ISO.
5. Extraction plenum
6. Supply plenum
7. VENT-FLEXEO supply motorised fan and VENT-FLEXEO extraction motorised fan.
8. CADS-FLEXEO: Static heat recovery unit.
9. Roof terminal cowl CT.

MOUNTING ACCESSORIES



KIT M5/G4 FLEXEO
 Replacement kit of M5 and G4 filters.



**BARJ
BARP**
 Self-adjusting calibrated extraction valves.



BDOP
 Supply and extraction valve.



RDR
 Self-adjusting damper (50-250 Pa) that, fitted inside the duct, maintains constant airflow.



RD BP
 Specific low-pressure (20-100 Pa) and self-adjusting damper with sleeve to fit directly into the duct.
 80mm diameter.
 Airflow: 15 or 30 m³/h.



RD BP SM
 Specific low-pressure (20-100 Pa) and self-adjusting damper without sleeve to fit directly into the sleeve of the BDOP.
 80mm diameter.
 Airflow: 15 or 30 m³/h.



GPR-ISO
 Insulated rigid duct.



**GP
GPX
GP-PRO
GP-ISO**
 Insulated PVC ducts.



**TUBPLA V
TUBPLA**
 Self-extinguishing rectangular ducts with or without gasket.



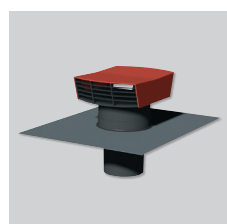
TAT
 Air inlet grille under roof.



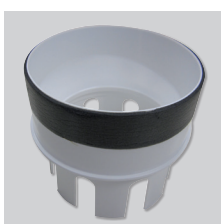
TAP
 Wall mounted air inlet grille.



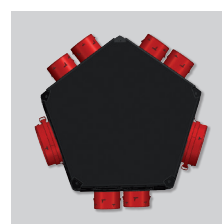
PAF
 Wall outlet grille.



CT
 Roof cowl.



ADRF 100/80
 Reduction to connect rigid duct to spigots for flexible ducts.



PLENUM UNI EXT 6+1
 Insulated extraction plenum of 125/ 150-160mm diameter, 1 Kitchen spigot of 125mm diameter and up to 6 sanitary spigots of 80mm diameter.



PLENUM UNI IMP 8
 Insulated supply plenum of 125/150-160mm diameter and up to 8 spigots for dry areas (living room, dining room, bedrooms) of 80mm diameter.