



The EBB Design extractor fans are suitable for many domestic and commercial ventilation applications where higher system resistance pressures are encountered. The EBB Design models incorporate a forward curved centrifugal impeller with single phase motor 230V-50Hz and Class II insulation (□). Maximum operating temperature 40°C.



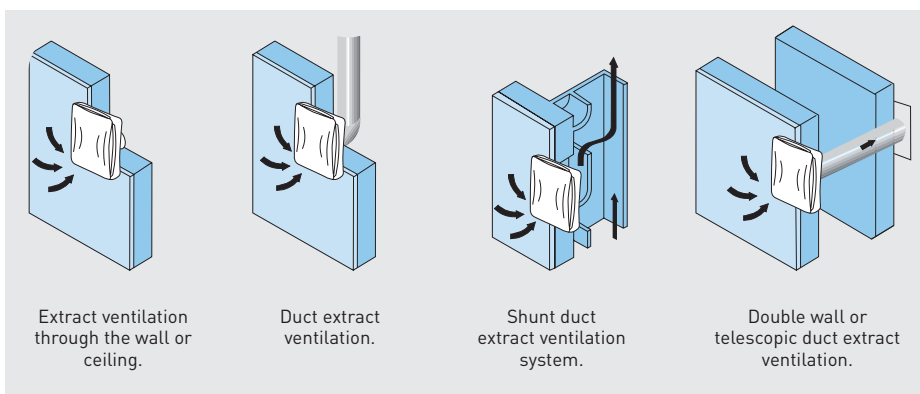
**Back draft shutter**  
The EBB Design are fitted with an automatic back draft shutter to prevent air entry and limit heat leakage when the extractor is not operating.



**Forward curved centrifugal impeller**  
To deliver high performance with a minimum noise level against high static pressure system resistance.



#### EXAMPLES OF INSTALLATION



### FEATURES

	S	M**	T	HM
BALL BEARINGS	•	•	•	•
BACKDRAFT SHUTTER	•	•	•	•
ON/OFF PULL CORD SWITCH		•		•
ONE SPEED MOTOR	•	•	•	
TWO SPEED MOTOR				•
USTABLE RUN-ON-TIMER (FROM 1 TO 30 MIN)			•	
ADJUSTABLE HUMIDISTAT 60-90 RH%				•
WIRING DIAGRAM*	2, 3	11	4, 5	4, 5, 11

\* See section of Wiring Diagrams.

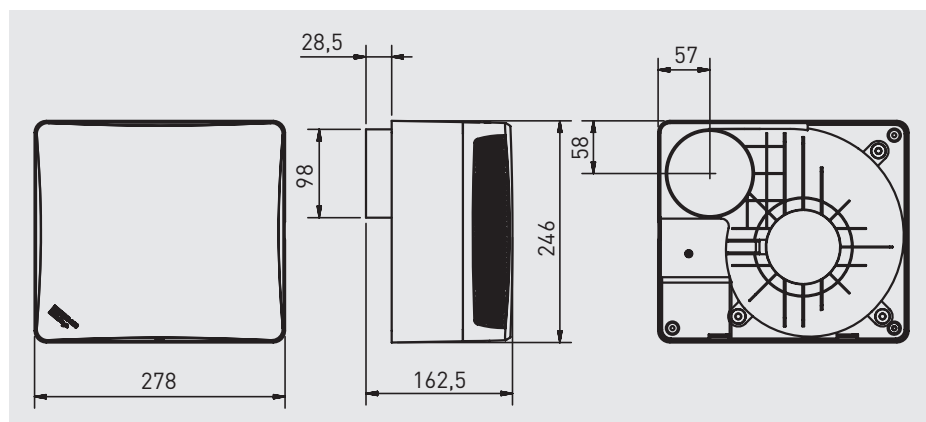
\*\* Only 250 model.

### TECHNICAL CHARACTERISTICS

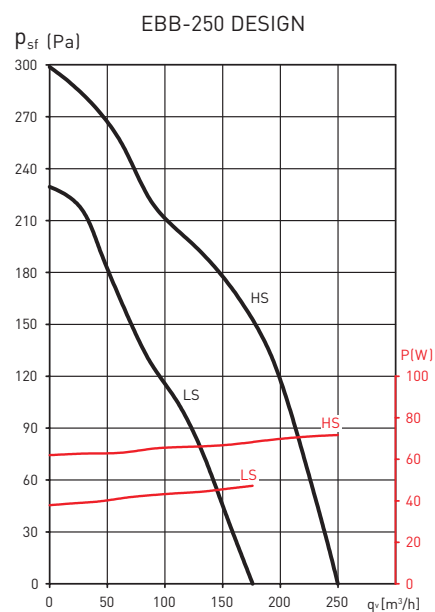
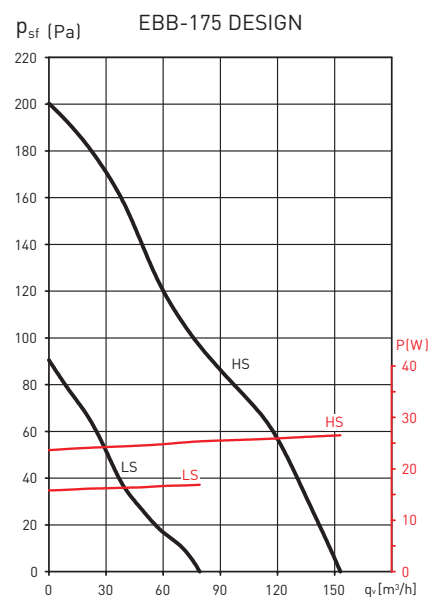
Model	Speed (rpm)	Abs. power at free discharge (W)	Voltage (V) 50Hz	Sound pressure level* (dB(A))	Airflow at free discharge (m³/h)	IP	Weight (kg)
EBB-175 DESIGN	1250	26	230	41	155	Class II / IP44	2,20
	930	17		33	80		
EBB-250 DESIGN	1920	72	230	51	250	Class II / IP44	2,20
	1380	47		43	175		

\* Sound pressure level measured at 1,5 m at free air conditions.

### DIMENSIONS (mm)



### PERFORMANCE CURVE



\* 2 speed motors only for HM and DV models.

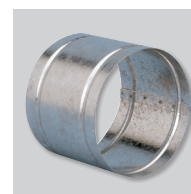
### ACCESSORIES



**GSA-100**  
Flexible aluminium ducting.



**GRA-75**  
Aluminium external grille.



**MRT-100**  
Circular duct joining piece.



**CX-80/125**  
Worm drive ducting clip.



**REB**  
Single phase electronic speed controllers.