



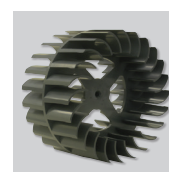
Centrifugal fans suitable for many domestic general ventilation applications where higher system resistance pressures are encountered.

The EB models incorporate a forward curved centrifugal impeller with single phase motor 230V-50Hz. IPX2. Class II. Suitable to operate with air temperature up to 40°C.



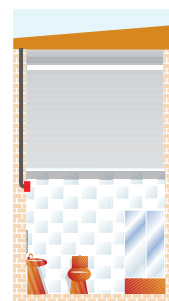
Back draft shutter

EB-100 are fitted with an automatic back draft shutter to prevent air entry and limit heat leakage when the extractor is not operating.



Forward curved centrifugal impeller

To deliver high performance with a minimum noise level against high static pressure system resistance.



MODEL FEATURES

	S	T	HT
NEON LIGHT	●	●	●
BACKDRAFT SHUTTER	●	●	●
ADJUSTABLE RUN-ON-TIMER (1)		●	●
INTERNAL HUMIDISTAT (2)			●

(1) Between 5 and 25 minutes.

(2) From 60% to 90% of RH.

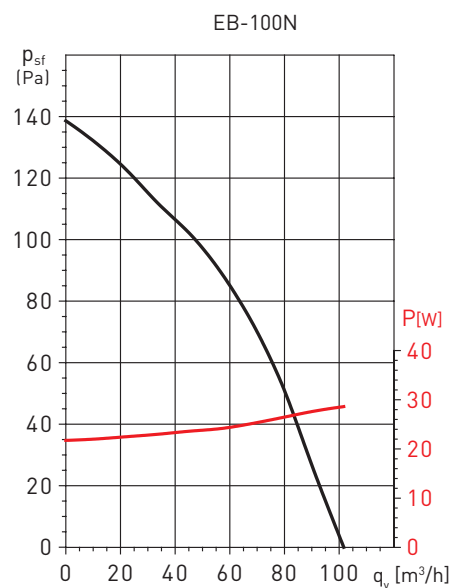
TECHNICAL CHARACTERISTICS

Model	Speed (rpm)	Absorbed power at free discharge (W)	Voltage (V) 50 Hz	Sound pressure level (dB(A)) a 1,5 m **	Airflow at free discharge (m ³ /h)	IP	Ø duct (mm)	Weight (kg)
EB-100N	2000	28	230	43	100	Clase II / IPX2	100	1,1

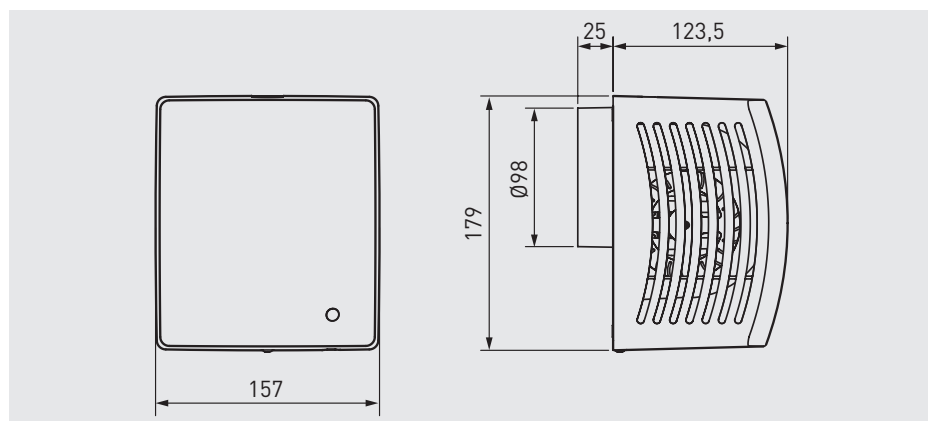
* Versión H: IPX2.

** Medido a descarga libre.

PERFORMANCE CURVE



DIMENSIONS (mm)



ACCESSORIES



GSA-100
Flexible aluminium ducting.



GRA-75
Aluminium external grille.



CX-80/125
Worm drive ducting clip.



MRT-100
Circular duct joining piece.