



Residential heat recovery unit available in both sensible and enthalpic versions. Includes high efficiency counterflow heat exchanger (up to 92% in DOME0 Sensible and up to 90% in DOME0 Enthalpic). Low consumption EC motors are available. Provides a constant supply of fresh tempered air into the living spaces of a house. Domeo can communicate with home automation system via Modbus or other gateway protocols. To optimise energy consumption and air quality, it can be connected to a CO<sub>2</sub> or humidity sensor and others. Domeo 210 is fitted with a 100% bypass and it is equipped with F7 or M5 filters at the inlet and with G4 filters at the outlet to protect the heat exchanger. Includes remote control, by-pass and reset of clogged filters.

### Features

- Sensible version: Sensible heat exchanger with efficiencies up to 92%.
- Enthalpic version: Enthalpic heat exchanger with efficiencies up to 90% (sensible) and 85% (enthalpic).
- Low-consumption EC motor
- Centrifugal backward curved impeller
- Modbus communication
- EPP body
- Nozzles Ø125 mm
- 100% automatic or manual bypass
- Inlet filter:
  - F7 (ISO ePM1 65%).
  - Option, M5 (ISO ePM10 50%).
- Extraction filter G4 (ISO coarse 65%).



### Controller

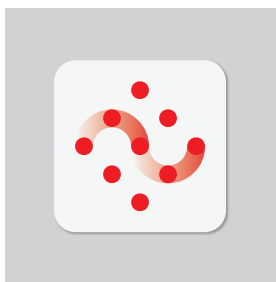
Remote control included in the product allows regulation of:

- By-pass
- Polluted filters alarm
- Speed management



### Very compact

Minimum width and depth.



### Connectair

Through the optional SPCM Lite L module, the unit can access Connectair, S&P's IoT that allows to monitor and control the system via cloud. Module non-compatible with the included remote control.



DOME0 210 FL 3V

### Specific applications



Single dwellings



Multi dwelling blocks

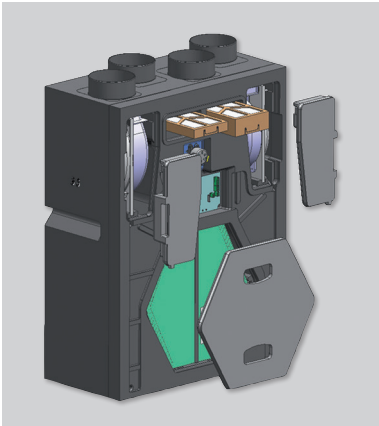
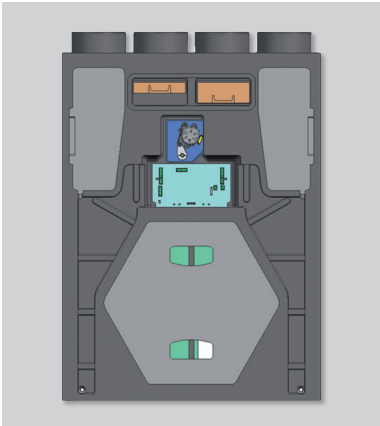


Heat recovery unit

EASY MAINTENANCE



Easy access to filters.

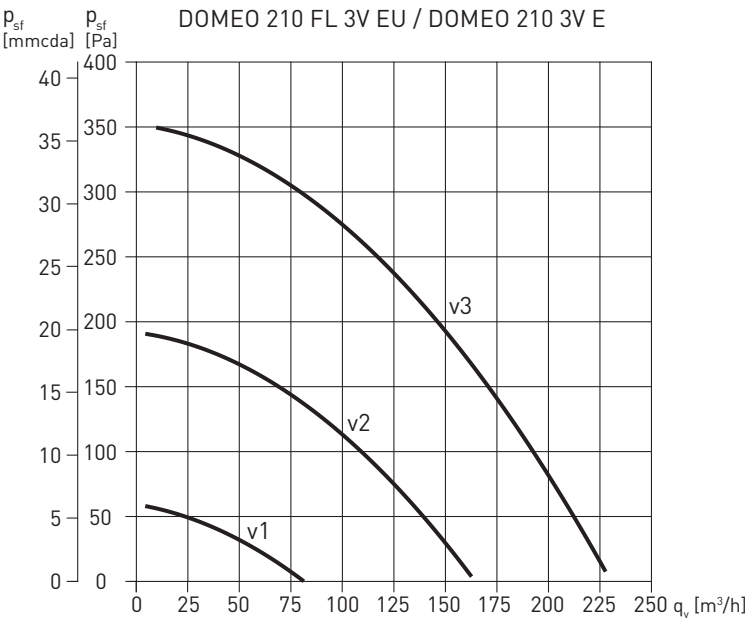


Easy to access: fans, heat exchanger and by-pass.

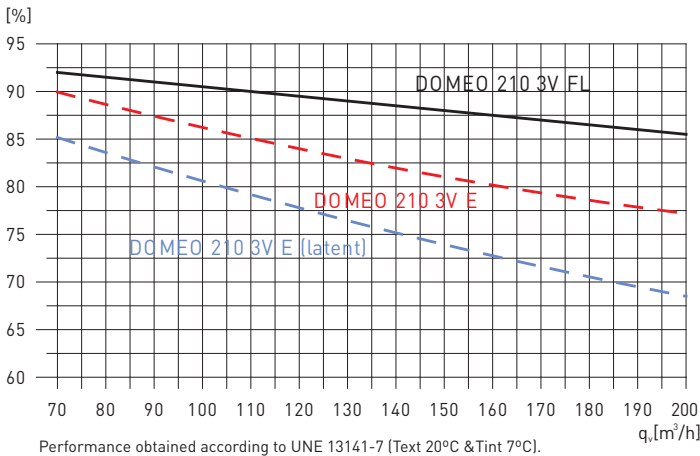
TECHNICAL CHARACTERISTICS

Modelo	Maximum sensible efficiency (%)	Maximum latent efficiency (%)	Voltage (V)	Maximum airflow a 100 Pa (m³/h)	Sound pressure level at 1,5 m (120 m³/h - 70 Pa) (dB(A))	Absorbed power (W)
DOMEQ 210 FL 3V EU	92	-	230	210	39	100
DOMEQ 210 3V E	90	85	230	200	39	70

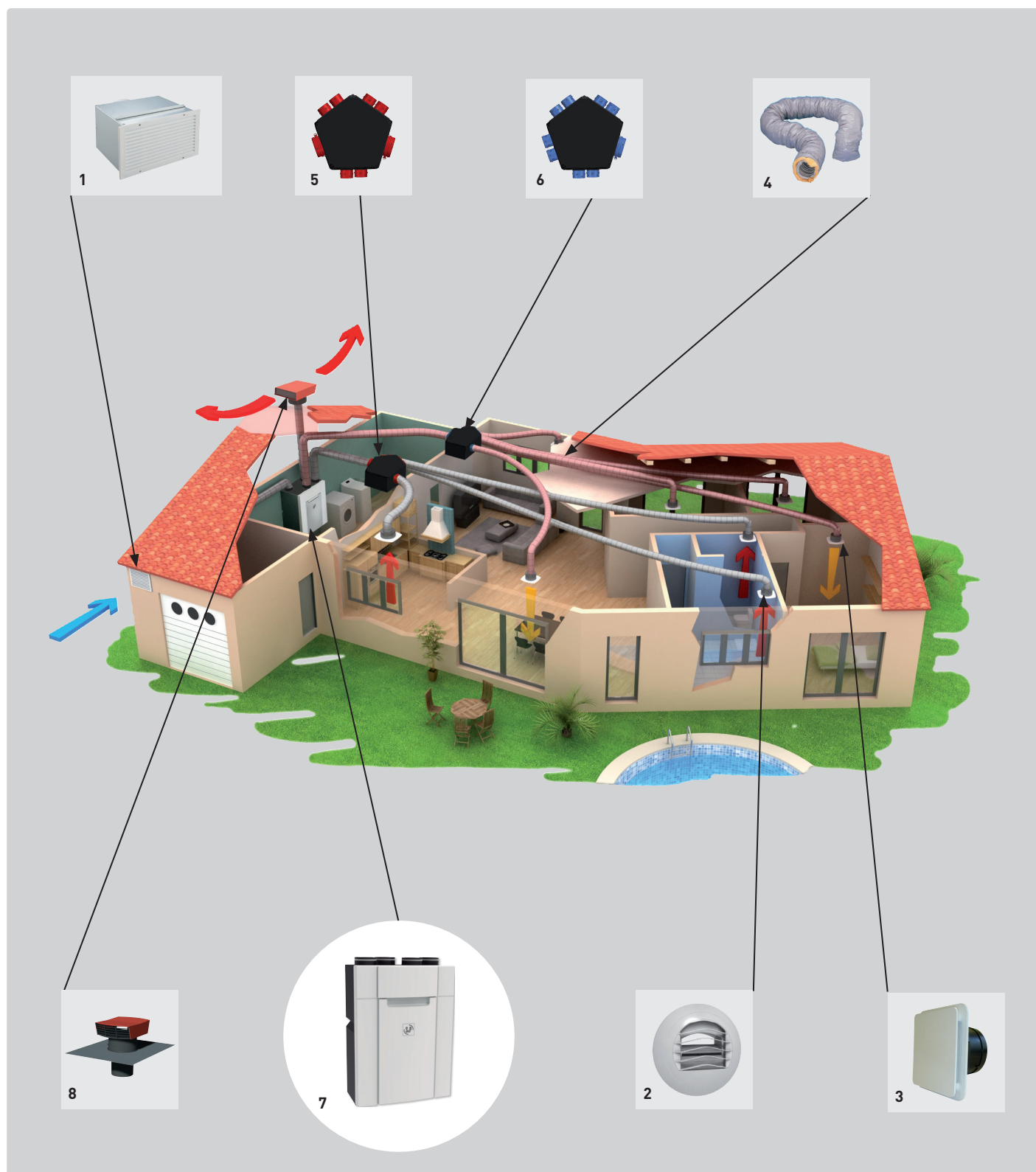
PERFORMANCE CURVES



EFFICIENCY CURVES

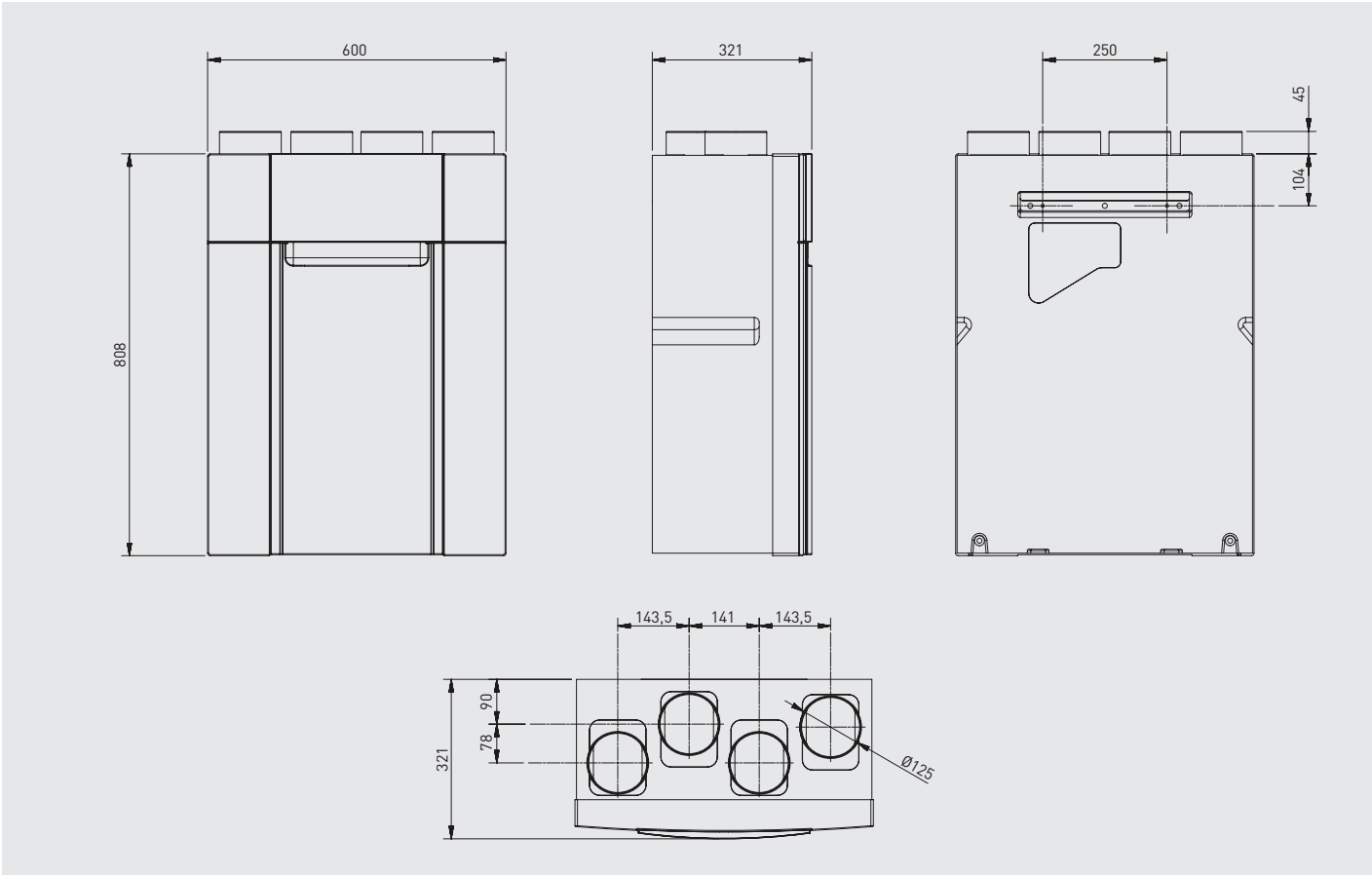


**DOMEO 210 SERIES - CENTRALISED COUNTER-FLOW SYSTEM**



1. Air inlet grille TAP.
2. Self-adjusting extraction valve BARJ / BARP.
3. Supply and extraction valve BDOP.
4. PVC or rectangular plastic ducts.
5. Extraction plenum.
6. Supply plenum.
7. DOME0 210
8. CT Roof termination.

DIMENSIONS (mm)



### MOUNTING ACCESSORIES

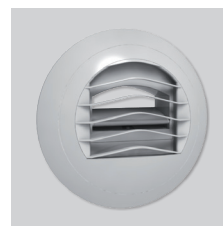


**KIT M5/G4 DOMEO**  
Pack of M5 and G4 spare filters.

**KIT F7/G4 DOMEO**  
Pack of F7 and G4 spare filters.



**Side trims**



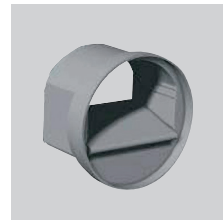
**BARJ  
BARP**  
Self-adjusting calibrated extraction valves.



**BDOP**  
Supply and extraction valve.



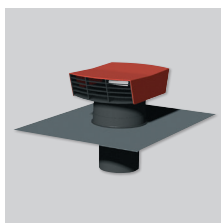
**RDR**  
Self-adjusting damper (50-250 Pa) that, fitted inside the duct, maintains constant airflow.



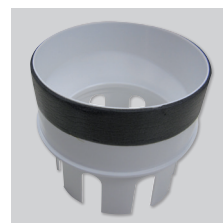
**RD BP**  
Specific low-pressure (20-100 Pa) and self-adjusting damper with sleeve to fit directly into the duct. 80mm diameter. Airflow: 15 or 30 m³/h.



**RD BP SM**  
Specific low-pressure (20-100 Pa) and self-adjusting damper without sleeve to fit directly into the sleeve of the BDOP. 80mm diameter. Airflow: 15 or 30 m³/h.



**CT**  
Roof cowl.



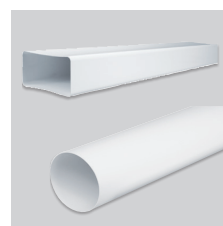
**ADRF 100/80**  
Reduction to connect rigid duct to spigots for flexible ducts.



**GPR-ISO**  
Insulated rigid duct.



**GP  
GPX  
GP-PRO  
GP-ISO**  
insulated PVC ducts .



**TUBREC**  
Rectangular ducts in flame-retardant plastic.



**TAT**  
Air inlet grille under roof.



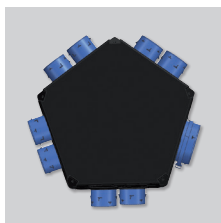
**TAP**  
Wall mounted air inlet grille.



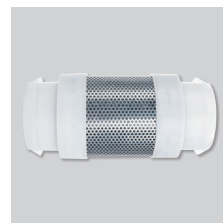
**PAF**  
Wall outlet grille.



**PLENUM UNI EXT 6+1**  
Insulated extraction plenum of 125/150-160mm diameter, 1 Kitchen spigot of 125mm diameter and up to 6 sanitary spigots of 80mm diameter.



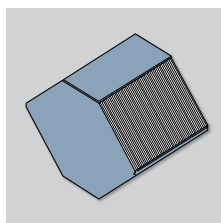
**PLENUM UNI IMP 8**  
Insulated supply plenum of 125/150-160 mm diameter and up to 8 spigots for dry areas (living room, dining room, bedrooms) of 80mm diameter.



**LA**  
Acoustic connections.



**FLEXIREC  
FLEXICIR**  
Oblong and circular semi-flexible ducts.



**ENTALPIC HEAT EXCHANGER**  
Available as a spare part, to transform a standard DOMEO into a DOMEO E.

**ELECTRICAL ACCESSORIES**



**AIRSENS-CO2**  
**AIRSENS-VOC**  
**AIRSENS-HR**  
Intelligent IAQ device  
available in three  
different versions:  
CO2 or VOC or RH.



**SPCM Lite L**  
Communications  
module.



**AIRSENS RF**  
Single-phase  
speed controller.