

Range of belt driven cabinet fans designed for smoke extraction in fire conditions and certified F400-120 (CE marked). The casings are manufactured from heavy gauge galvanised sheet steel. All models incorporate double inlet forward curved centrifugal impellers. Belt-driven transmission system mounted external to the air stream. Supplied as standard in horizontal discharge (code H) or vertical (code V) configuration with motor, pulley and belt assembly on the right hand side of the unit when viewed from the discharge end.

#### Motors

All motors are IP55, class F insulation. Electrical supply.

Three phase 220-240/380-415-50/60\* Hz up to 3 kW.

(\*Check Easyvent for 60Hz available models)

Three phase 380-415V-50Hz, for higher power motors and two speed motors.

(See characteristics chart).

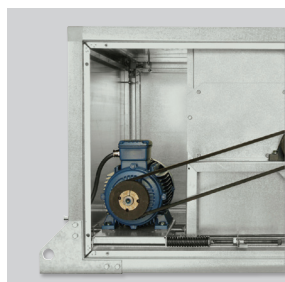
#### On request

Motor, pulley and belt assembly fitted on the left hand side of the unit when viewed from the discharge end (TI version).

Two speed motors (4/6 and 4/8 poles).

Single phase motors 230V-50Hz up to 2,2 kW.

Single phase motor (CVHN-H-B y CVHN-V-B models) up to 2,2 kW.



#### Compact design

Motor inside the fan casing, providing a smaller size and a higher compacity.

#### Specific applications



Officially approved to EN12101-3 standard. Certificate n° 0370-CPD-0359



Continuous operation



Car Parks

### TECHNICAL CHARACTERISTICS

Before installation check that the product electrical characteristics listed on the data plate label (voltage, power, frequency, etc.) match those of the intended electrical supply.

Model	Motor power		Fan speed		Airflow		Weight with bigger motor (kg)
	Minimum (kW)	Maximum (kW)	Minimum (rpm)	Maximum (rpm)	Minimum (m <sup>3</sup> /h)	Maximum (m <sup>3</sup> /h)	
CVHN-9/9	0,25	1,1	800	1700	1.000	4.950	94
CVHN-10/10	0,25	2,2	800	1600	1.360	6.320	115
CVHN-12/12	0,37	3	600	1500	1.980	10.600	136
CVHN-15/15	0,75	4	600	1200	2.900	14.500	172
CVHN-18/18	0,75	7,5	400	950	2.380	21.270	239

### ACOUSTIC CHARACTERISTICS

Sound power spectrum: To obtain the sound power level spectrum subtract the correction values (dB(A)) shown in the table below at the corresponding octave average frequencies from the value provided in the product performance.

Model	63 Hz	125 Hz	250 Hz	500 Hz	1000 Hz	2000 Hz	4000 Hz	8000 Hz	16000 Hz
CVHN-9/9	17	15	11	12	4	5	14	19	27
CVHN-10/10	17	15	11	11	4	5	14	20	27
CVHN-12/12	16	14	11	10	4	5	15	21	27
CVHN-15/15	13	13	10	10	5	5	15	22	27
CVHN-18/18	11	12	9	9	5	6	15	22	27

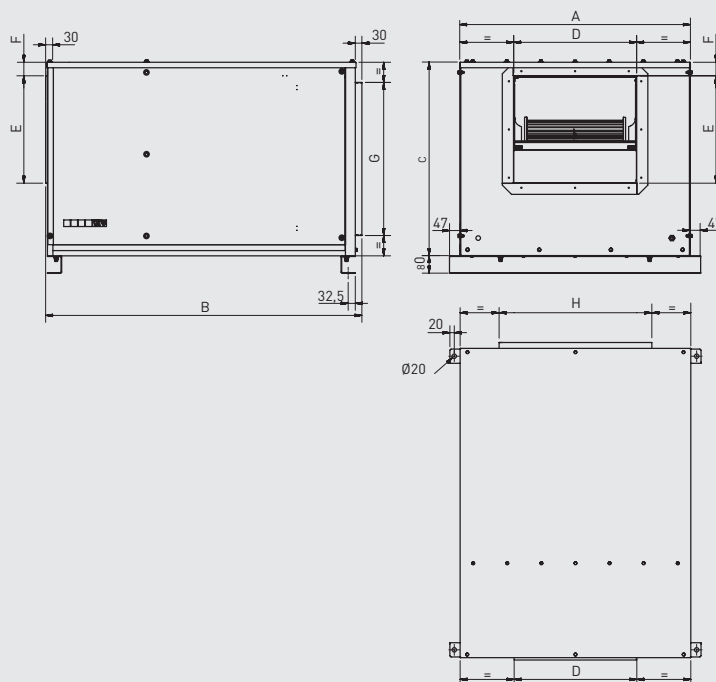
### MOTOR POWERS (KW) FOR CVHN PRODUCT RANGE

1 SPEED	4 POLE	0,25	0,37	0,55	0,75	1,1	1,5	2,2	3	4	5,5	7,5
2 SPEED	4/6 POLE	0,25/0,09	-	-	0,7/0,2	0,85/0,25	1,4/0,5	2,4/0,75	3,4/1,1	4/1,2	6,3/1,9	9/3
	4/8 POLE	0,25/0,06	0,37/0,07	0,55/0,09	0,75/0,12	1,1/0,18	1,5/0,25	2,2/0,37	3/0,55	4/0,75	5,5/1,1	7,5/1,5

NOTE: For 2 speed motors, the powers may have small variations depending on the motor manufacturer.

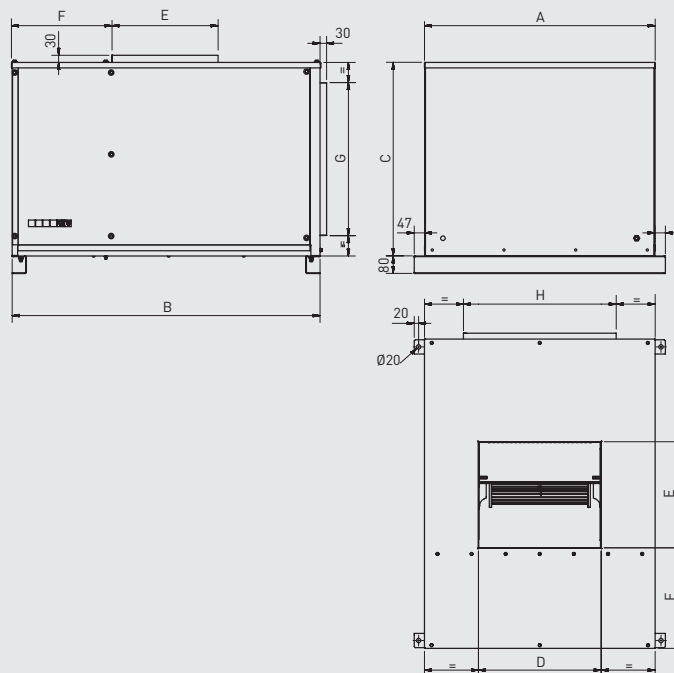
**DIMENSIONS (mm)**

CVHN 9-10-12-15-18 Horizontal



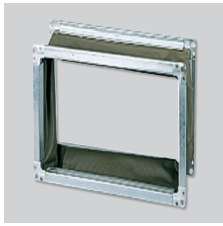
Model	A	B	C	D	E	F	G	H
CVHN/H 9/9	598	897	596	305	274	50	400	400
CVHN/H 10/10	648	962	622	336	304	50	450	450
CVHN/H 12/12	753	1112	687	400	345	53	500	500
CVHN/H 15/15	953	1267	780	483	410	76	600	600
CVHN/H 18/18	1053	1443	884	561	490	62	700	700

CVHN 9-10-12-15-18 Vertical



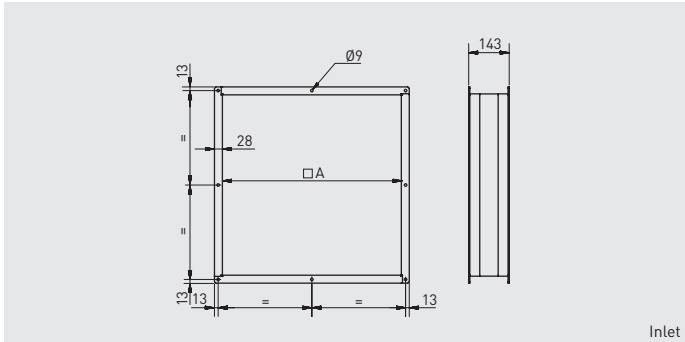
Model	A	B	C	D	E	F	G	H
CVHN/V 9/9	598	897	596	305	274	360	400	400
CVHN/V 10/10	648	962	622	336	304	369	450	450
CVHN/V 12/12	753	1112	687	400	345	408	500	500
CVHN/V 15/15	953	1267	780	483	410	446	600	600
CVHN/V 18/18	1053	1443	884	561	490	458	700	700

**MOUNTING ACCESSORIES**

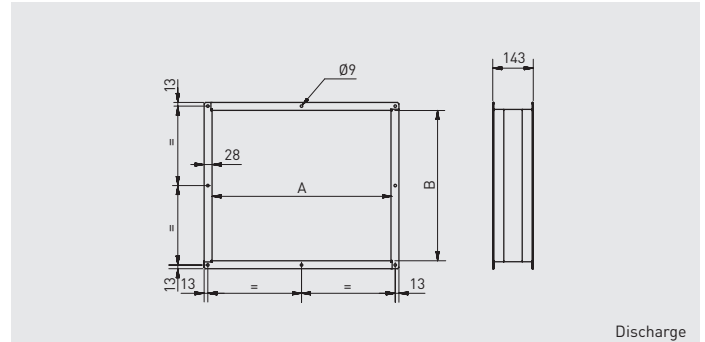


**ACOP RECT F400**  
Rectangular flexible connectors.

ACOP RECT F400 ASP for mounting to inlet of CVHN/H and CVHN/V.  
ACOP RECT F400 IMP for mounting to discharge of CVHN/H and CVHN/V.



Inlet



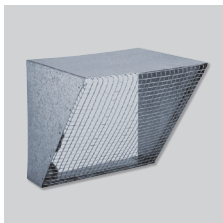
Discharge

Model Cabinet	Inlet		
	Model	A	Nº holes
CVHN-9/9	ACOP RECT F400 9/9 ASP	402	8
CVHN-10/10	ACOP RECT F400 10/10 ASP	452	8
CVHN-12/12	ACOP RECT F400 12/12 ASP	502	8
CVHN-15/15	ACOP RECT F400 15/15 ASP	602	8
CVHN-18/18	ACOP RECT F400 18/18 ASP	702	8

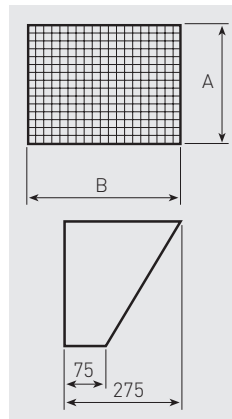
Dimensions (mm)

Model Cabinet	Discharge			
	Model	A	B	Nº holes
CVHN/H-9/9	ACOP RECT F400 9/9 IMP	305	265	8
CVHN/H-10/10	ACOP RECT F400 10/10 IMP	338	294	8
CVHN/H-12/12	ACOP RECT F400 12/12 IMP	401	346	8
CVHN/H-15/15	ACOP RECT F400 15/15 IMP	477	408	8
CVHN/H-18/18	ACOP RECT F400 18/18 IMP	561	486	8

Dimensions (mm)



**CVD (Discharge) – CVA (Inlet) Protection guards**  
Wire protection guards for mounting on the discharge sides of the cabinets. (CVHN/H)

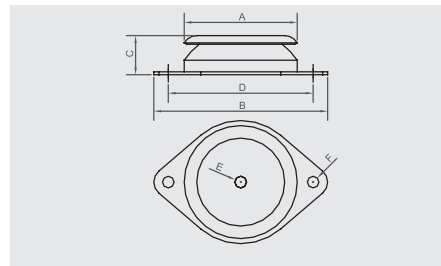


Cabinet model	Discharge			Inlet		
	Guard model	A	B	Guard model	A	B
CVHN/H-9/9	CVD-9	263	303	CVA-9	403	403
CVHN/H-10/10	CVD-10	292	336	CVA-10	453	453
CVHN/H-12/12	CVD-12	344	399	CVA-12	503	503
CVHN/H-15/15	CVD-15	406	476	CVA-15	603	603
CVHN/H-18/18	CVD-18	482	559	CVA-18	703	703

Dimensions (mm)



**PAVZ**  
Rubber anti-vibration mounts with metallic bases that absorb vibration and attenuate the noise produced in the installation.



Model	A	B	C	D	ØE	ØF	Weight (kg)
PAVZ-60	60	90	24	76	M6	6,2	40
PAVZ-80	80	120	27	100	M8	8,2	80
PAVZ-100	100	148	28	124	M10	10,2	205
PAVZ-150	150	214	39	182	M14	12,2	358
PAVZ-200	200	280	44	240	M18	14,5	499

Dimensions (mm)