



High-performance vertical air curtains with electrical coil to be installed in commercial environments.

**Characteristics**

**For installation in up to 2.5 m (V version) and 3 m openings (VL version).**

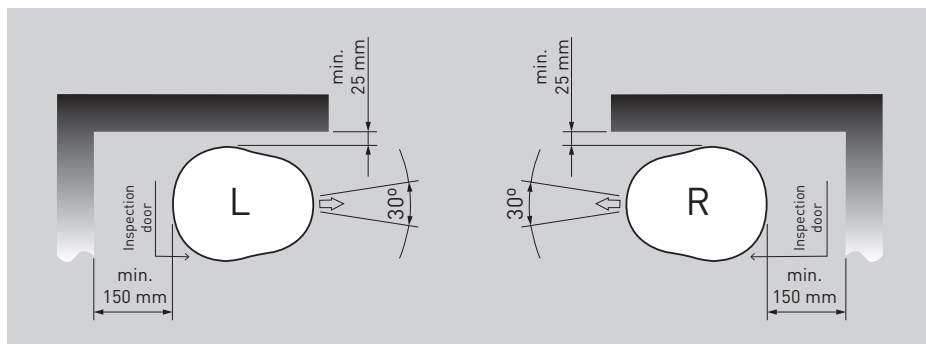
Built-in manual or automatic control.  
Modbus communication.  
Centrifugal motor-fan assembly with forward blades.  
Rear suction and lateral exhaust.  
Version (R) to be installed on the right side of the door facing inside. Version (L) for left-sided installation.

**On request**

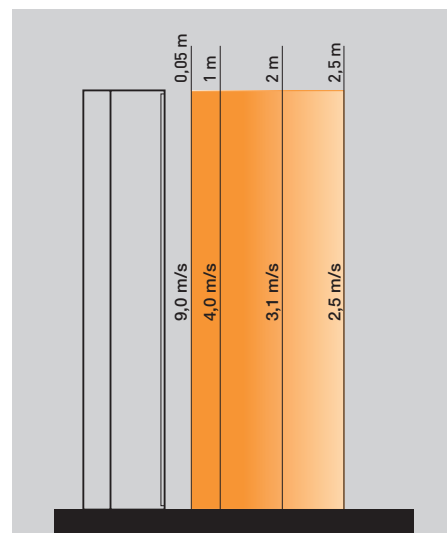
Versions not equipped with an ADVANCE (SM) control unit.

**Applications**

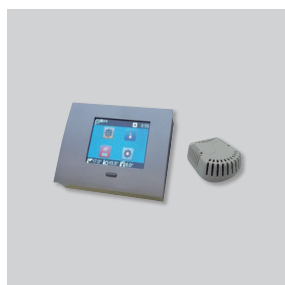
See Curtains - Introduction page: Characteristics and Applications.



Minimum distances



Distance/air speed COR-PRO-V



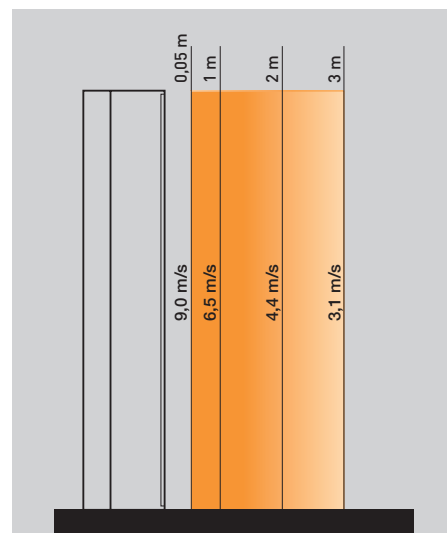
**Control ADVANCE** touch screen control included in all COR-PRO series.  
LxWxH (mm): 125x90x32

Basic functionalities:

- Manual control by selecting target speed.
- Automatic control via temperature set-point and door status (requires CR-MAGNET COR-PRO accessory). It is possible to select the target temperature using a sensor at the exhaust outlet (factory-installed) or an ambient sensor (included in the wall-mounted packaging).
- Programmable weekly schedule.
- Summer/winter mode.
- Modbus communication.

The connection between the control and the curtain must be made via an RJ45 cable (not included).  
Accessory RJ45-10 COR-PRO (10 m long).

It also incorporates a room temperature sensor that can be installed for automatic system control based on the target ambient temperature.  
LxWxH (mm): 72x59x28



Distance/air speed COR-PRO-VL

### TECHNICAL CHARACTERISTICS

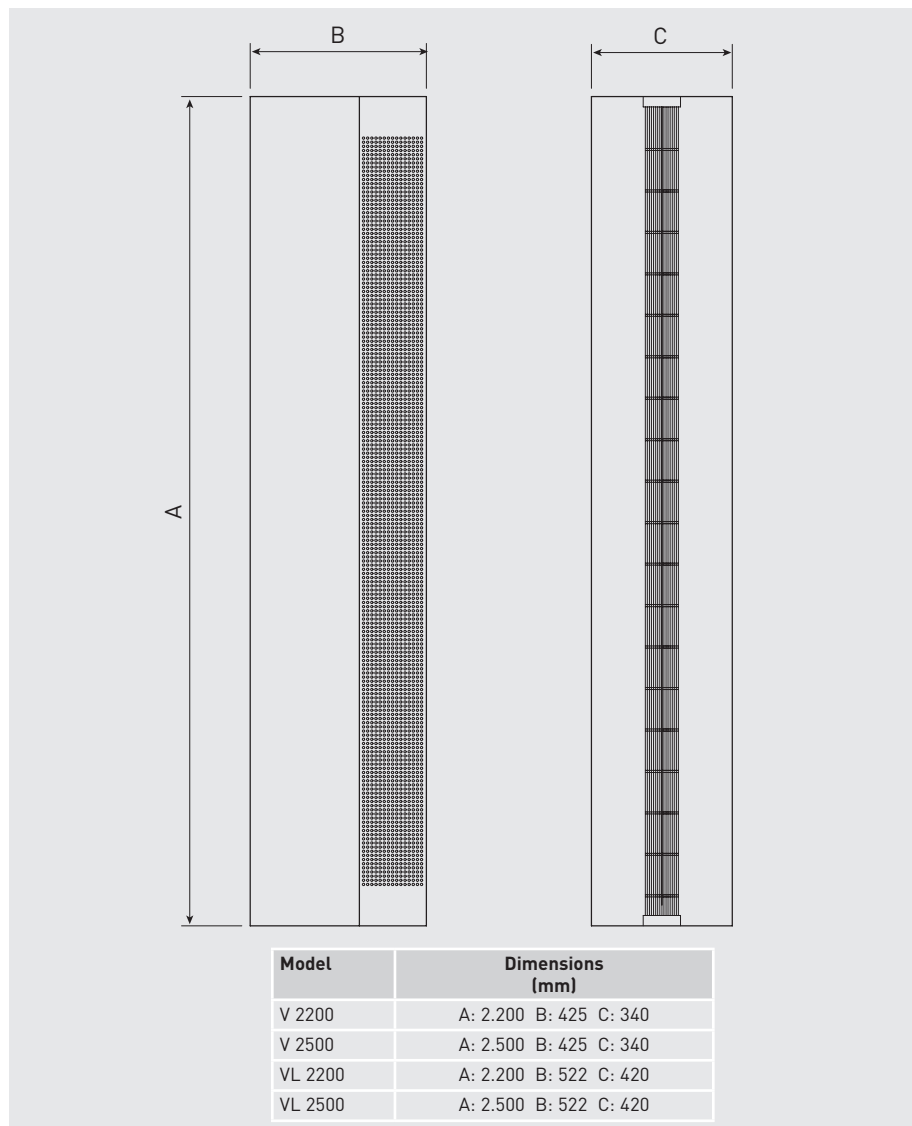
Model	Voltage 50Hz (V)	Heating capacity (kW)	Motor power (W)	Int. abs. (A)	Speeds	Flow rate (m³/h)			Air outlet speed¹ (m/s)	Maximum² ΔT (°C)			Decibel level³ (dB(A))	Weight (kg)	Colour
						Speed				Speed					
						Fast	Medium	Slow		High	Medium	Slow			
COR-PRO-V 15 2200 R ADVANCE	3N 400	15/10/5,5	875	23	3	3.700	2.500	1.250	9	10	18	36	57	90	White RAL 9010
COR-PRO-V 15 2200 L ADVANCE	3N 400	15/10/5,5	875	23	3	3.700	2.500	1.250	9	10	18	36	57	90	White RAL 9010
COR-PRO-V 22,5 2500 R ADVANCE	3N 400	22,5/15/8	1.050	34	3	4.200	2.840	1.420	9	16	23	46	59	100	White RAL 9010
COR-PRO-V 22,5 2500 L ADVANCE	3N 400	22,5/15/8	1.050	34	3	4.200	2.840	1.420	9	16	23	46	59	100	White RAL 9010
COR-PRO-VL 15 2200 R ADVANCE	3N 400	15/10/5,5	1.350	24	3	5.400	3.620	1.810	9	8	12	24	60	105	White RAL 9010
COR-PRO-VL 15 2200 L ADVANCE	3N 400	15/10/5,5	1.350	24	3	5.400	3.620	1.810	9	8	12	24	60	105	White RAL 9010
COR-PRO-VL 22,5 2500 R ADVANCE	3N 400	22,5/15/8	1.620	35	3	6.480	4.320	2.170	9	10	15	30	62	115	White RAL 9010
COR-PRO-VL 22,5 2500 L ADVANCE	3N 400	22,5/15/8	1.620	35	3	6.480	4.320	2.170	9	10	15	30	62	115	White RAL 9010

1. Maximum flow rate measured according to AMCA 220.

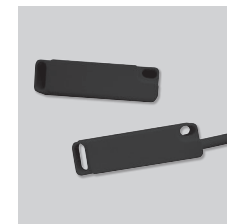
2. Values with the following conditions: maximum power and +15°C air inlet temperature.

3. Measured at 3 m distance, unobstructed area.

### DIMENSIONS (mm)



### ACCESSORIES



**CR-MAGNET COR-PRO**  
Magnetic contact for open/closed door detection. Includes a 2.5 m long cable.  
LxWxH (mm): 45x12x10



**RJ45-10 COR-PRO**  
10 m long RJ45 type cable to connect the control unit to the air curtain.



**RJ11-5 COR-PRO**  
5 m long RJ11 type cable for master-slave connection between air curtains.